



THE MODULE SYSTEM

2023
COMPONENTS CATALOGUE



SEVENPOINT INTERIORS

SevenPoint Interiors exists to bring premium retail design and manufacturing to the cannabis industry.

Our talented team will help our clients build brand recognition by crafting their vision into reality and we're excited to lead the charge. We offer a complete package of services from concept design thru installation to facilitate a turnkey solution for our customers.

SevenPoint Interiors was founded in 2016 as a division of Visual Elements. Our onsite manufacturing facility is fully equipped to execute state-of-the-art fabrication and finishes. With over 30 years of design, build, manufacturing and branding experience, we're ready to take your business to new heights.



CONTENTS

4	THE MODULE SYSTEM
5	DESIGN PROGRAMS
8	WALL SYSTEM
19	TABLE SYSTEM
25	FREESTANDING FLOOR FIXTURES
31	CASH + BACK WRAP SYSTEM
40	LIGHTING
43	VISUAL MERCHANDISING
53	CONTACT



THE MODULE SYSTEM

The Module System is our proprietary modular fixture display collection, designed specifically for the retail cannabis industry.

Available in standard and custom colours, a wide range of finishes and infinite configurations, just plug in your brand and floor plan and you've got a premium cannabis retail shop. Using this system, we can design and manufacture fixtures and displays that are unique to your brand, without a massive timeline or budget.





DESIGN PROGRAMS

HOW IT WORKS



À LA CARTE

PROGRAM

If you already have an established shop and just need a few display fixtures, or need help with a new floor plan layout, the à la Carte Program is for you.

We'll use the Module System along with your floor plan and brand identity to fill the holes.

THIS PROGRAM INCLUDES:

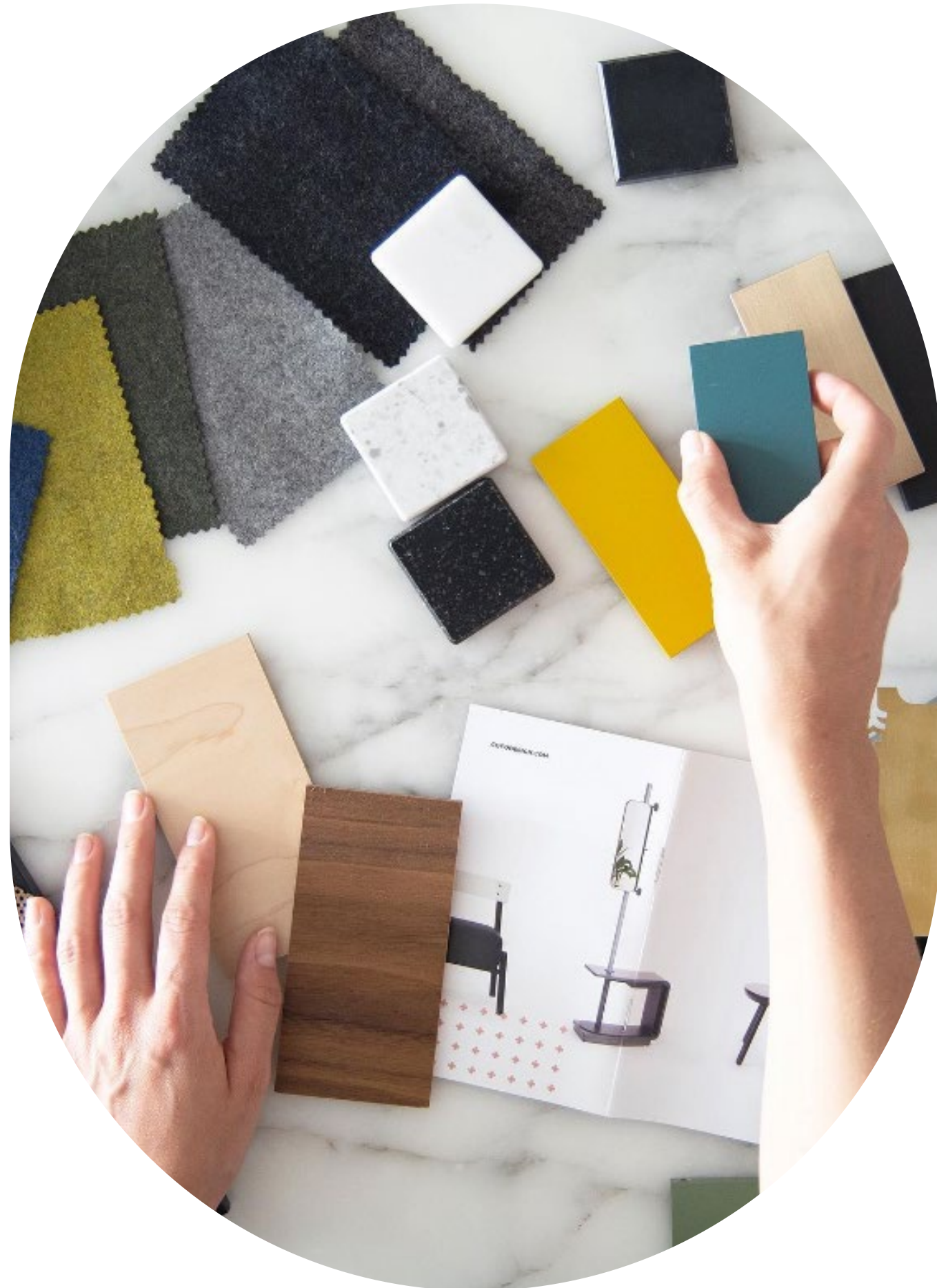
- Floor plan layout
- The Module System fixture plan

POWDER COATS
white, black or grey

LAMINATES
maple, oak, walnut, black or white



NOTE
Fixtures shown in white powder coat with maple laminate.



CUSTOM MODULE

PROGRAM

If you need a complete store design, but are short on time and working with a modest budget, the Custom Program is for you.

Using the Module System, provide us with your vision of the space and we'll create a custom design that speaks to your brand ethos.

THIS PROGRAM INCLUDES:

- Custom design concept with mood board & design direction
- Floor plan layout and elevations
- The Module System fixture plan with custom colour and finish
- Decorative lighting plan
- 3D renderings of your design

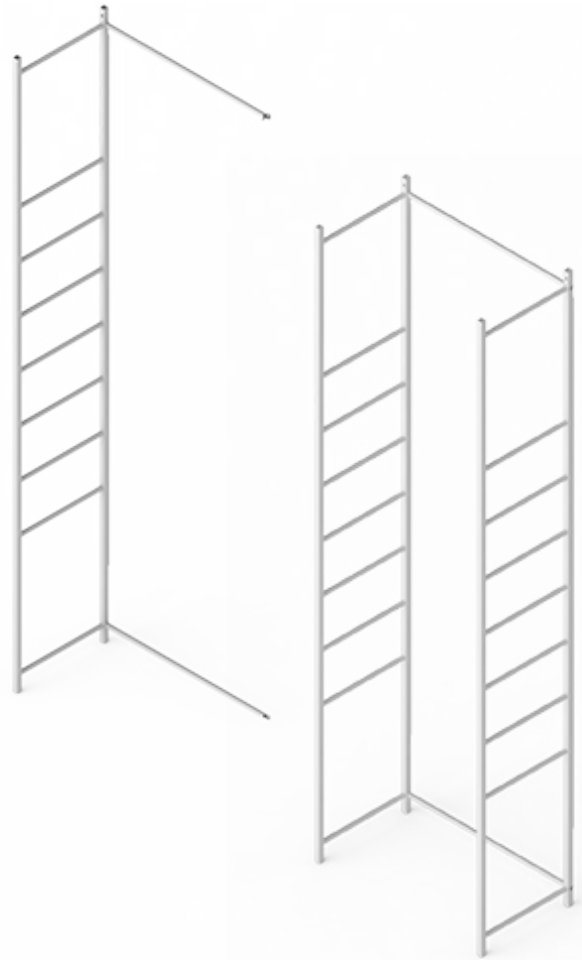


WALL SYSTEM

COMPONENTS

WALL SYSTEM FRAMES

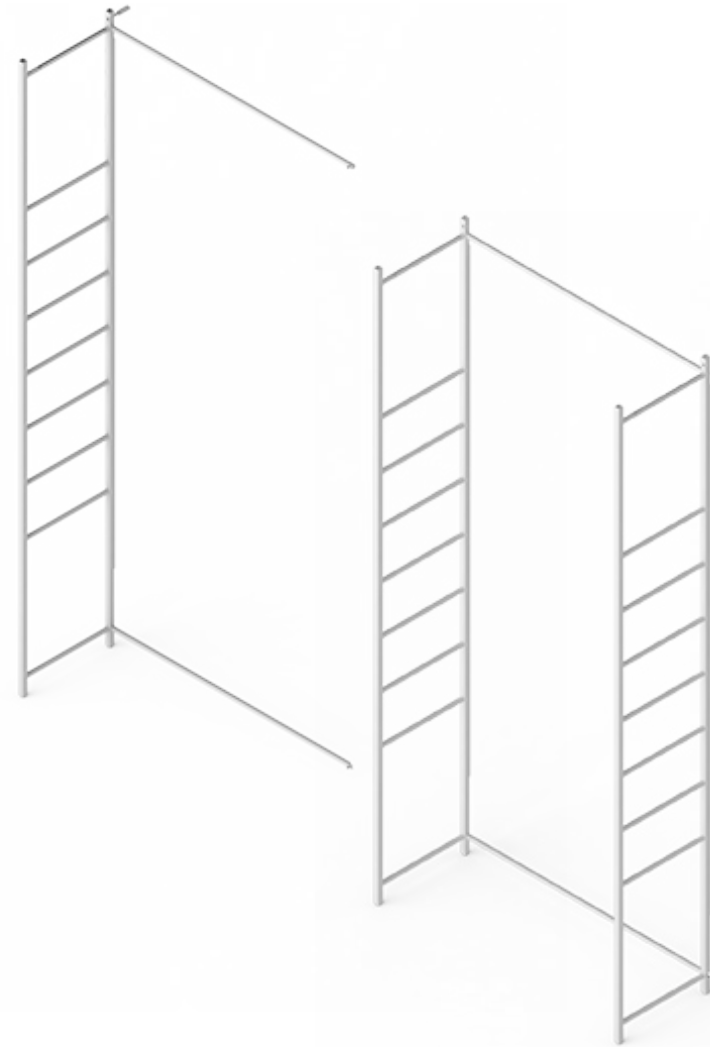
24" WIDE FRAMES



24" 1 BAY WALL FRAME
24.75"W X 15.75"D X 84"H
70-00001-00000000040

24" ADD-ON WALL FRAME
25.5"W X 15.75"D X 84"H
70-00296-00000000040

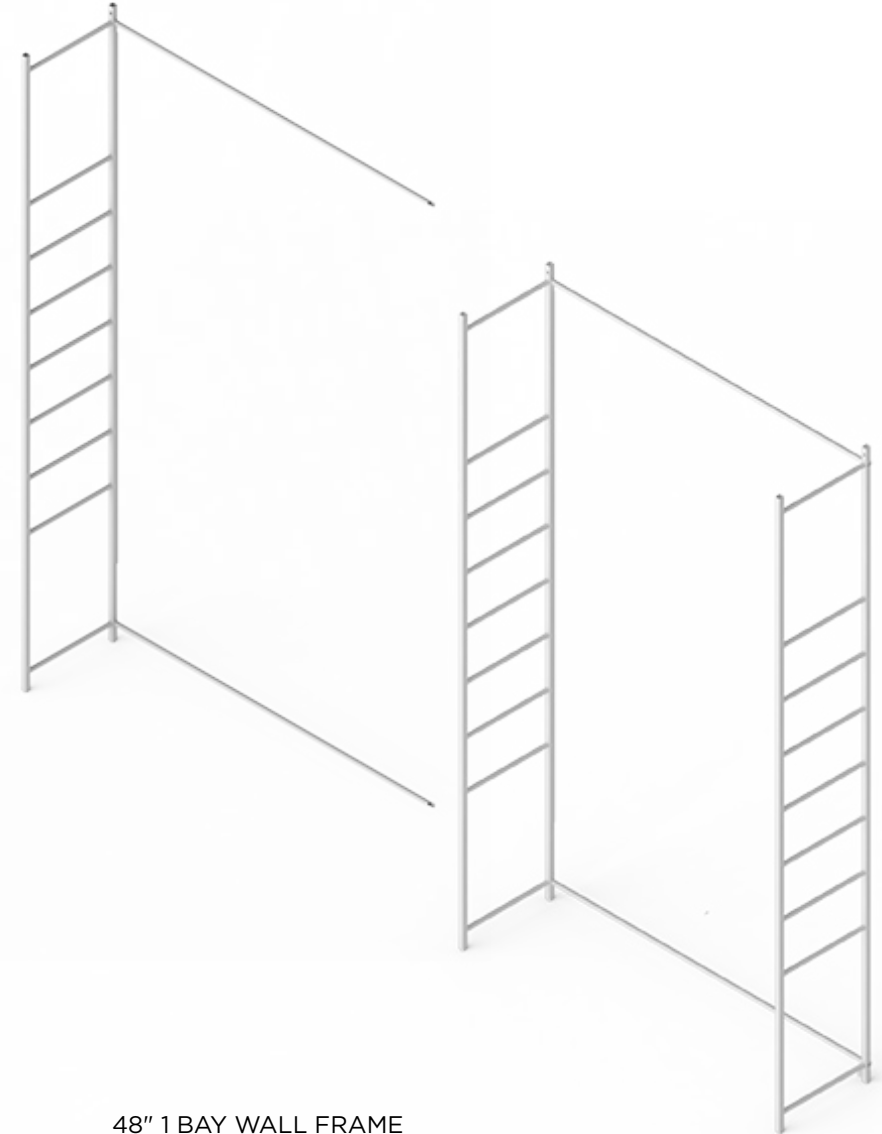
36" WIDE FRAMES



36" 1 BAY WALL FRAME
36.75"W X 15.75"D X 84"H
70-00007-00000000040

36" ADD-ON WALL FRAME
37.5"W X 15.75"D X 84"H
70-00297-00000000040

48" WIDE FRAMES



48" 1 BAY WALL FRAME
48.75"W X 15.75"D X 84"H
70-00102-00000000040

48" ADD-ON WALL FRAME
49.5"W X 15.75"D X 84"H
70-00298-00000000040



WALL SYSTEM SHELVES

● 24" WIDE SHELVES



24" WOOD SHELF CAP
23.75"W X 13.375"D X 1.5"H
70-00013-00000000020

● 36" WIDE SHELVES



36" WOOD SHELF CAP
35.75"W X 13.375"D X 1.5"H
70-00015-00000000020

● 48" WIDE SHELVES



48" WOOD SHELF CAP
47.75"W X 13.375"D X 1.5"H
70-00109-00000000020



24" METAL WALL SHELF
23.875"W X 13.875"D X .5"H
70-00014-00000000040



36" METAL WALL SHELF
37.875"W X 13.875"D X .5"H
70-00016-00000000040



48" METAL WALL SHELF
47.875"W X 13.875"D X .5"H
70-00110-00000000040



WALL SYSTEM SHELVES

● 24" WIDE SHALLOW SHELVES



24" WOOD SHELF CAP SHALLOW
23.75"W X 8.25"D X 1.5"H
70-00320-00000000020

● 36" WIDE SHALLOW SHELVES



36" WOOD SHELF CAP SHALLOW
23.75"W X 8.25"D X 1.5"H
70-00322-00000000020

● 48" WIDE SHALLOW SHELVES



48" WOOD SHELF CAP SHALLOW
23.75"W X 8.25"D X 1.5"H
70-00324-00000000020



24" METAL WALL SHELF SHALLOW
23.875"W X 7.75"D X .5"H
70-00321-00000000040



36" METAL WALL SHELF SHALLOW
23.875"W X 8.25"D X .5"H
70-00323-00000000040

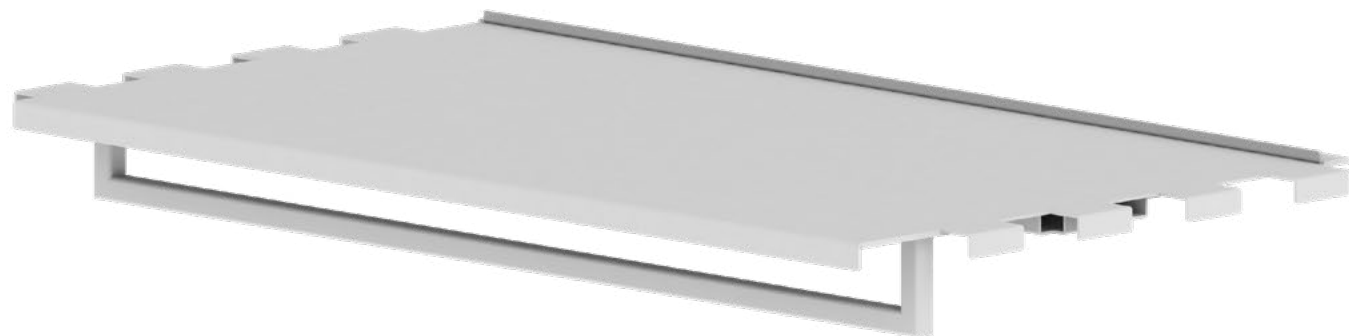


48" METAL WALL SHELF SHALLOW
23.875"W X 7.75"D X .5"H
70-00325-00000000040



WALL SYSTEM SHELVES

● SHELVES WITH GARMENT ROD



24" METAL WALL SHELF WITH GARMENT ROD
23.875"W X 13.875"D X 3"H
70-00267-00000000040

36" METAL WALL SHELF WITH GARMENT ROD
37.875"W X 13.875"D X 3"H
70-00268-00000000040

48" METAL WALL SHELF WITH GARMENT ROD
47.875"W X 13.875"D X 3"H
70-00316-00000000040

● SHELVES WITH GARMENT ROD - FRONT FACING



24" METAL WALL SHELF WITH GARMENT ROD - FRONT FACING
23.875"W X 13.875"D X 6.25"H
70-00317-00000000040

36" METAL WALL SHELF WITH GARMENT ROD - FRONT FACING
37.875"W X 13.875"D X 6.25"H
70-00318-00000000040

48" METAL WALL SHELF WITH GARMENT ROD - FRONT FACING
47.875"W X 13.875"D X 6.25"H
70-00319-00000000040



WALL SYSTEM DISPLAY BOXES

● 24" WIDE DISPLAY BOXES



RIGHT OPENING SHOWN

24" 1-DOOR SHORT DISPLAY BOX
LEFT OPENING
23.75"W X 12.5"D X 12.5"H
70-00111-00000000063

24" 1-DOOR MEDIUM DISPLAY BOX
LEFT OPENING
23.75"W X 12.5"D X 17"H
70-00112-00000000063

24" 1-DOOR TALL DISPLAY BOX
LEFT OPENING
23.75"W X 12.5"D X 32"H
70-00113-00000000063

24" 1-DOOR EXTRA-TALL DISPLAY BOX
LEFT OPENING
23.75"W X 12.5"D X 46.5"H
70-00293-00000000063

24" 1-DOOR SHORT DISPLAY BOX
RIGHT OPENING
23.75"W X 12.5"D X 12.5"H
70-00019-00000000063

24" 1-DOOR MEDIUM DISPLAY BOX
RIGHT OPENING
23.75"W X 12.5"D X 19.5"H
70-00020-00000000063

24" 1-DOOR TALL DISPLAY BOX
RIGHT OPENING
23.75"W X 12.5"D X 32"H
70-00021-00000000063

24" 1-DOOR EXTRA-TALL DISPLAY BOX
RIGHT OPENING
23.75"W X 12.5"D X 46.5"H
70-00292-00000000063

● 36" WIDE DISPLAY BOXES



36" 2-DOOR SHORT DISPLAY BOX
35.75"W X 12.5"D X 12.5"H
70-00022-00000000063

36" 2-DOOR MEDIUM DISPLAY BOX
35.75"W X 12.5"D X 19.5"H
70-00023-00000000063

36" 2-DOOR TALL DISPLAY BOX
35.75"W X 12.5"D X 32"H
70-00024-00000000063

36" 2-DOOR EXTRA-TALL DISPLAY BOX
35.75"W X 12.5"D X 46.5"H
70-00294-00000000063



WALL SYSTEM DRAWERS

24" WIDE DRAWERS



24" 1-DRAWER CABINET
23.75"W X 12.5"D X 17.25"H
WHITE INT.: 70-00039-00000000061
BLACK INT.: 70-00430-00000000061

36" WIDE DRAWERS



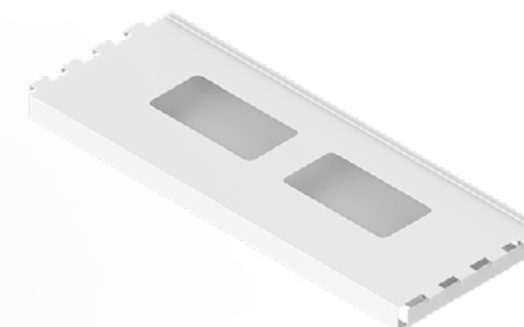
36" 1-DRAWER CABINET
35.75"W X 12.5"D X 17.5"H
WHITE INT.: 70-00040-00000000061
BLACK INT.: 70-00434-00000000061

48" WIDE DRAWERS



48" 2-DRAWER CABINET
47.75"W X 12.5"D X 17.5"H
WHITE INT.: 70-00120-00000000061
BLACK INT.: 70-00438-00000000061

BASES



24" METAL WALL BASE
23.875"W X 13.875"D X .2"H
70-00289-00000000040

36" METAL WALL BASE
37.875"W X 13.875"D X 2"H
70-00290-00000000040

48" METAL WALL BASE
47.875"W X 13.875"D X 2"H
70-00302-00000000040



24" 2-DRAWER CABINET
23.75"W X 12.5"D X 31.75"H
WHITE INT.: 70-00118-00000000061
BLACK INT.: 70-00431-00000000061



36" 2-DRAWER CABINET
35.75"W X 12.5"D X 31.75"H
WHITE INT.: 70-00119-00000000061
BLACK INT.: 70-00435-00000000061



48" 4-DRAWER CABINET
47.75"W X 12.5"D X 31.75"H
WHITE INT.: 70-00121-00000000061
BLACK INT.: 70-00439-00000000061



WALL SYSTEM CABINETS

24" WIDE CABINETS



RIGHT OPENING SHOWN

24" 1-DOOR SHORT CABINET LEFT OPENING

23.75"W X 12.5"D X 17.5"H
 WHITE INT.: 70-00114-00000000061
 BLACK INT.: 70-00428-00000000061

24" 1-DOOR TALL CABINET LEFT OPENING

23.75"W X 12.5"D X 31.75"H
 WHITE INT.: 70-00115-00000000061
 BLACK INT.: 70-00429-00000000061

24" 1-DOOR SHORT CABINET RIGHT OPENING

23.75"W X 12.5"D X 17.5"H
 WHITE INT.: 70-00035-00000000061
 BLACK INT.: 70-00426-00000000061

24" 1-DOOR TALL CABINET RIGHT OPENING

23.75"W X 12.5"D X 31.75"H
 WHITE INT.: 70-00036-00000000061
 BLACK INT.: 70-00427-00000000061

36" WIDE CABINETS



36" 2-DOOR SHORT CABINET

35.75"W X 12.5"D X 17.5"H
 WHITE INT.: 70-00037-00000000061
 BLACK INT.: 70-00429-00000000061

36" 2-DOOR TALL CABINET

35.75"W X 12.5"D X 31.75"H
 WHITE INT.: 70-00038-00000000061
 BLACK INT.: 70-00433-00000000061

48" WIDE CABINETS



48" 2-DOOR SHORT CABINET

47.75"W X 12.5"D X 17.5"H
 WHITE INT.: 70-00116-00000000060
 BLACK INT.: 70-00432-00000000061

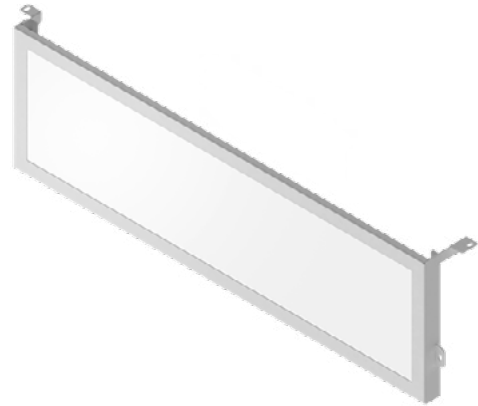
48" 2-DOOR TALL CABINET

47.75"W X 12.5"D X 31.75"H
 WHITE INT.: 70-00117-00000000060
 BLACK INT.: 70-00433-00000000061



WALL SYSTEM GRAPHIC HEADERS

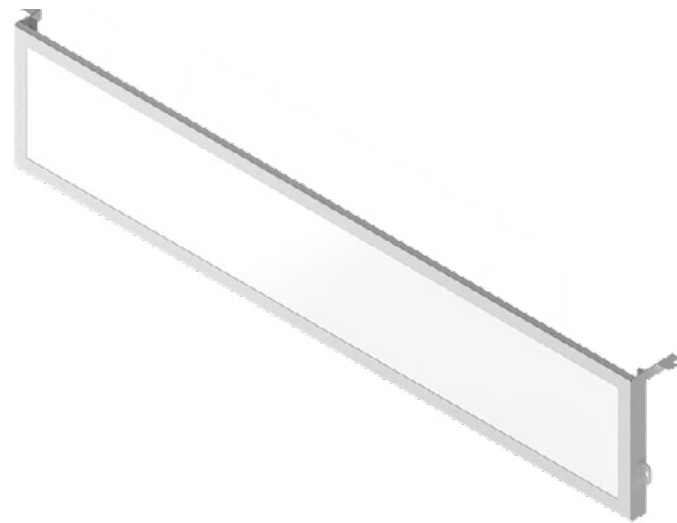
● 24" WIDE HEADERS



24" SHORT HEADER
25.125"W X 1"D X 7.125"H
70-00045-00000000042

24" TALL HEADER
25.125"W X 1"D X 14.125"H
70-00046-00000000042

● 36" WIDE HEADERS



36" SHORT HEADER
37.125"W X 1"D X 7.125"H
70-00047-00000000042

36" TALL HEADER
37.125"W X 1"D X 14.125"H
70-00048-00000000042

● 48" WIDE HEADERS

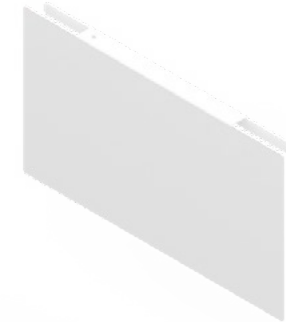


48" SHORT HEADER
39.125"W X 1"D X 7.125"H
70-00127-00000000040

48" TALL HEADER
39.125"W X 1"D X 14.125"H
70-00127-00000000040

SIDE GABLES

SIDE GABLES ARE REQUIRED ON THE EXTREME ENDS OF WALL FRAMES WHEN USING HEADERS



SHORT WALL FRAME SIDE GABLE
13"W X .825"D X 7"H
70-00098-00000000041

TALL WALL FRAME SIDE GABLE
13"W X .825"D X 14"H
70-00295-00000000041

LIGHT RAILS

24" LIGHT RAIL
25.125"W X 1"D X .5"H
70-00124-00000000040

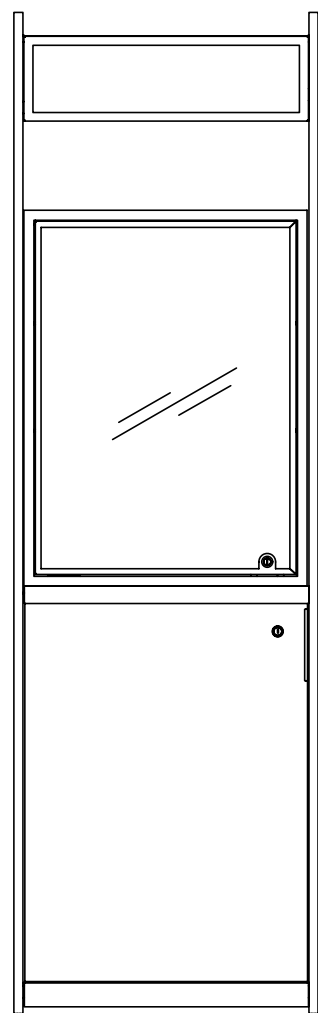
36" LIGHT RAIL
37.125"W X 1"D X .5"H
70-00125-00000000040

48" LIGHT RAIL
39.125"W X 1"D X .5"H
70-00128-00000000040



WALL SYSTEM CONFIGURATIONS

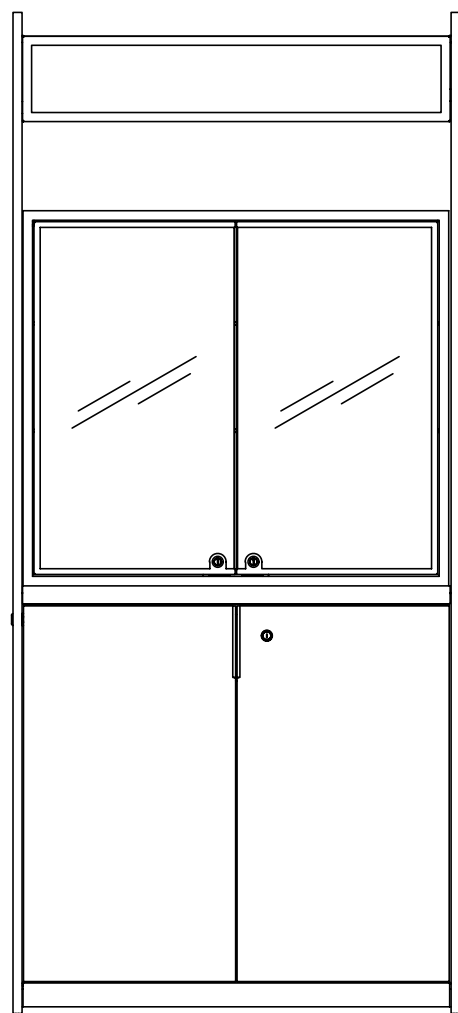
CONFIGURATION A



24" WIDE BAY

- 1 BAY FRAME - 1
- SHORT HEADER - 1
- TALL DISPLAY BOX - 1
- METAL SHELF - 1
- WOOD SHELF CAP - 1
- TALL CABINET - 1
- METAL WALL BASE - 1

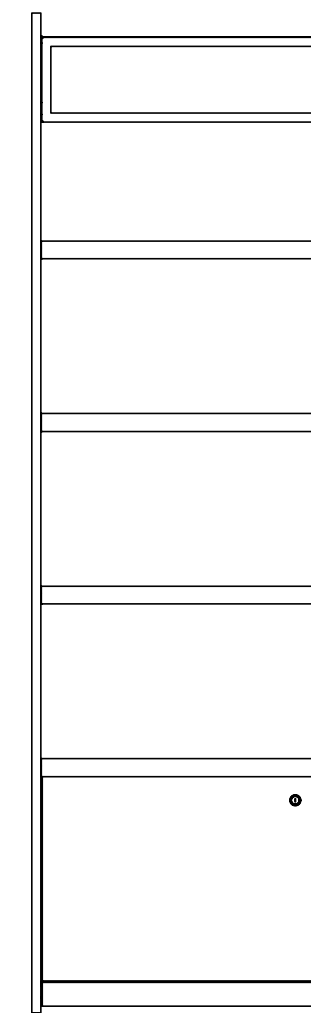
CONFIGURATION B



36" WIDE BAY

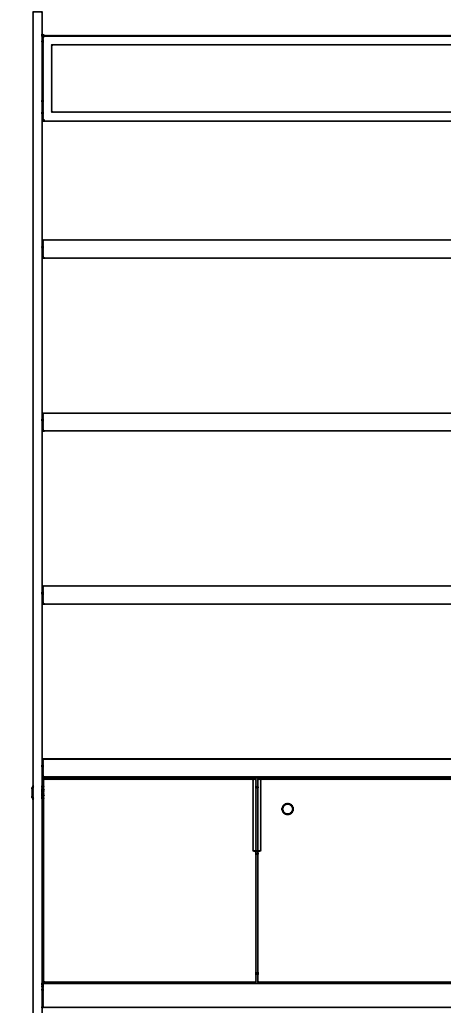
- 1 BAY FRAME - 1
- TALL HEADER - 1
- EXTRA TALL DISPLAY BOX - 1
- METAL SHELF - 1
- WOOD SHELF CAP - 1
- 1 DRAWER CABINET - 1
- METAL WALL BASE - 1

CONFIGURATION C



24" WIDE BAY

- 1 BAY FRAME - 1
- SHORT HEADER - 1
- METAL SHELF - 4
- WOOD SHELF CAP - 4
- SHORT CABINET - 1
- METAL WALL BASE - 1

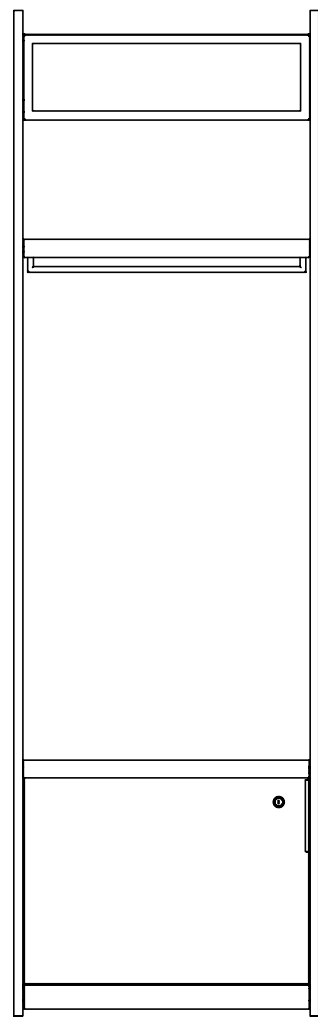


36" WIDE BAY



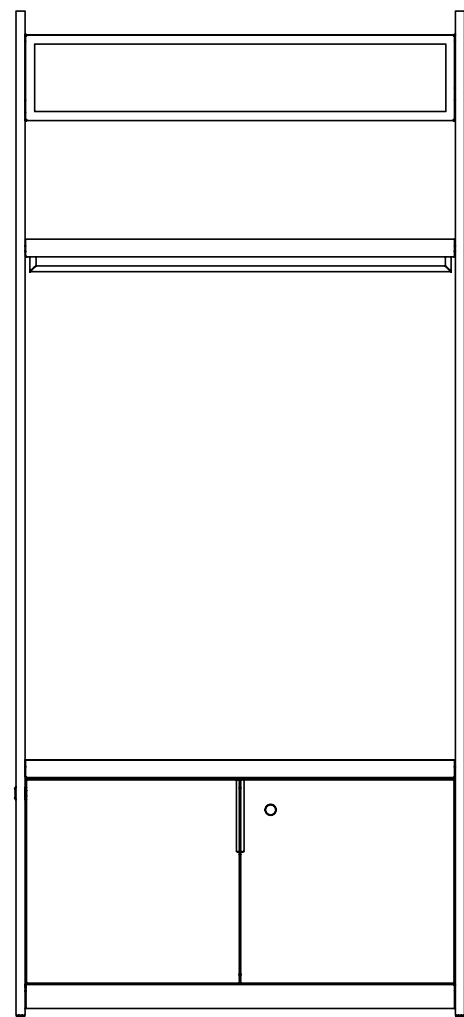
WALL SYSTEM CONFIGURATIONS

CONFIGURATION D



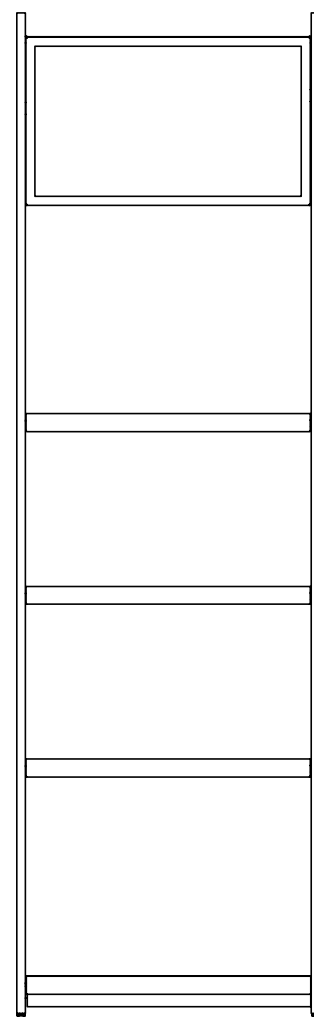
24" WIDE BAY

- 1 BAY FRAME - 1
- SHORT HEADER - 1
- METAL SHELF WITH GARMENT ROD - 1
- WOOD SHELF CAP - 1
- SHORT CABINET - 1
- METAL WALL BASE - 1



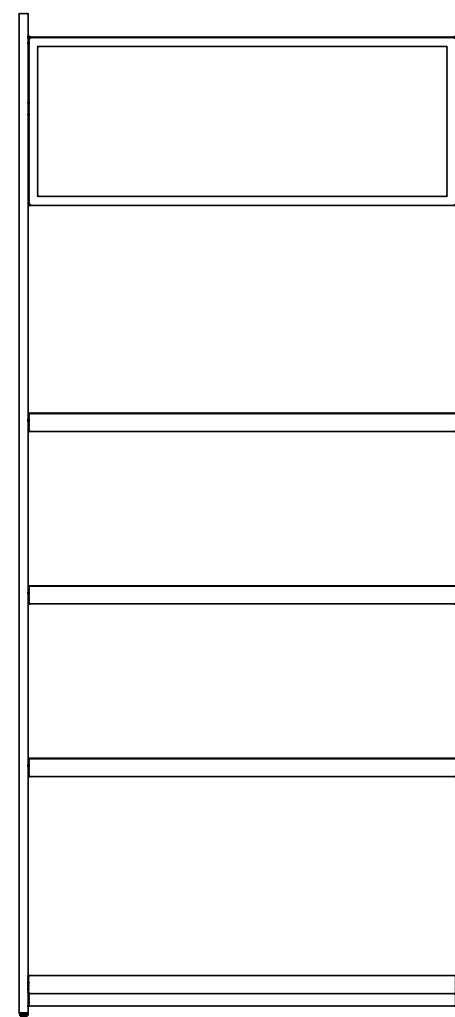
36" WIDE BAY

CONFIGURATION E



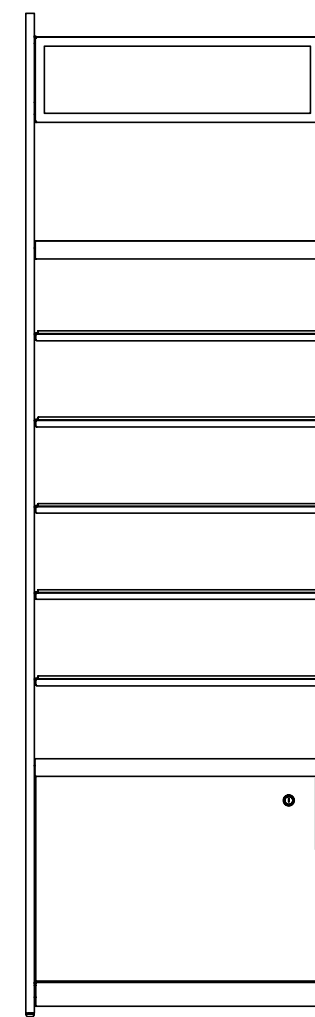
24" WIDE BAY

- 1 BAY FRAME - 1
- TALL HEADER - 1
- METAL SHELF - 3
- WOOD SHELF CAP - 4
- METAL WALL BASE - 1



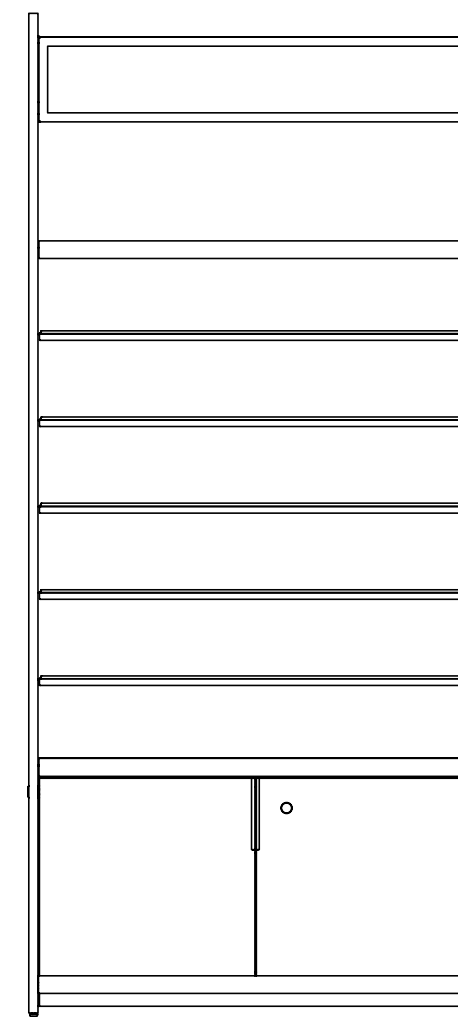
36" WIDE BAY

CONFIGURATION F



24" WIDE BAY

- 1 BAY FRAME - 1
- SHORT HEADER - 1
- METAL SHELF - 7
- WOOD SHELF CAP - 1
- SHORT CABINET - 1
- METAL WALL BASE - 1



36" WIDE BAY





TABLE SYSTEM

COMPONENTS

TABLE SYSTEM TABLES

24" WIDE TABLES



2'X2' STANDARD TABLE
24"W X 25.5"L X 36"H
70-00053-00000000061

2'X3' STANDARD TABLE
24"W X 37.5"L X 36"H
70-00054-00000000061

2'X4' STANDARD TABLE
24"W X 49.5"L X 36"H
70-00153-00000000062



2'X6' STANDARD TABLE
24"W X 73.5"L X 36"H
70-00055-00000000062

2'X8' STANDARD TABLE
24"W X 97.5"L X 36"H
70-00056-00000000062

36" WIDE TABLES



3'X2' STANDARD TABLE
36"W X 25.5"L X 36"H
70-00057-00000000061

3'X3' STANDARD TABLE
36"W X 37.5"L X 36"H
70-00058-00000000062

3'X4' STANDARD TABLE
36"W X 49.5"L X 36"H
70-00154-00000000060 70-00154-00000000062



3'X6' STANDARD TABLE
36"W X 73.5"L X 36"H
70-00059-00000000062

3'X8' STANDARD TABLE
36"W X 97.5"L X 36"H
70-00060-00000000062



TABLE SYSTEM TABLES

24" WIDE TABLES WITH DRAWER

DRAWERS ON ONE SIDE OF UNIT



2'X2' TABLE WITH DRAWER
24"W X 25.5"L X 36"H
70-00162-00000000061

2'X3' TABLE WITH DRAWER
24"W X 37.5"L X 36"H
70-00162-00000000063

2'X4' TABLE WITH DRAWER
24"W X 49.5"L X 36"H
70-00164-00000000062



2'X6' TABLE WITH DRAWERS
24"W X 73.5"L X 36"H
70-00165-00000000062

2'X8' TABLE WITH DRAWERS
24"W X 97.5"L X 36"H
70-00166-00000000062

36" WIDE TABLES WITH DRAWERS

DRAWERS ON BOTH SIDES OF UNIT



3'X2' TABLE WITH DRAWER
36"W X 25.5"L X 36"H
70-00167-00000000061

3'X3' TABLE WITH DRAWER
36"W X 37.5"L X 36"H
70-00168-00000000062

3'X4' TABLE WITH DRAWER
36"W X 49.5"L X 36"H
70-00169-00000000062



3'X6' TABLE WITH DRAWERS
36"W X 73.5"L X 36"H
70-00170-00000000062

3'X8' TABLE WITH DRAWERS
36"W X 97.5"L X 36"H
70-00171-00000000062



TABLE SYSTEM TABLES

● 24" WIDE DISPLAY BOX TABLES



2'X2' DISPLAY BOX TABLE
24"W X 25.5"L X 36"H
70-00061-00000000060

2'X3' DISPLAY BOX TABLE
24"W X 37.5"L X 36"H
70-00062-00000000060

2'X4' DISPLAY BOX TABLE
24"W X 49.5"L X 36"H
70-00155-00000000062



2'X6' DISPLAY BOX TABLE
24"W X 73.5"L X 36"H
70-00063-00000000060

2'X8' DISPLAY BOX TABLE
24"W X 97.5"L X 36"H
70-00064-00000000062

● 36" WIDE DISPLAY BOX TABLES



3'X2' DISPLAY BOX TABLE
36"W X 25.5"L X 36"H
70-00065-00000000060

3'X3' DISPLAY BOX TABLE
36"W X 37.5"L X 36"H
70-00066-00000000062

3'X4' DISPLAY BOX TABLE
36"W X 49.5"L X 36"H
70-00156-00000000062



3'X6' DISPLAY BOX TABLE
36"W X 73.5"L X 36"H
70-00067-00000000062

3'X8' DISPLAY BOX TABLE
36"W X 97.5"L X 36"H
70-00068-00000000062



TABLE SYSTEM IMPULSE BINS

12" WIDE IMPULSE BINS



1'X2' TABLE IMPULSE BIN
12"W X 25.5"L X 36"H
70-00069-00000000061

1'X3' TABLE IMPULSE BIN
12"W X 37.5"L X 36"H
70-00070-00000000061

1'X4' TABLE IMPULSE BIN
12"W X 49.5"L X 36"H
70-00071-00000000061



TABLE SYSTEM GLASS VITRINES

● VITRINES FOR 12" WIDE UNITS



1'X2' SHORT VITRINE
12"W X 21"L X 7"H
70-00027-00000000040

1'X3' SHORT VITRINE
12"W X 33"L X 7"H
70-00029-00000000040

1'X2' TALL VITRINE
12"W X 21"L X 12.5"H
70-00028-00000000040

1'X3' TALL VITRINE
12"W X 33"L X 12.5"H
70-00030-00000000040

● VITRINES FOR 24" WIDE UNITS



2'X2' SHORT VITRINE
21"W X 21"L X 7"H
70-00072-00000000061

2'X3' SHORT VITRINE
21"W X 33"L X 7"H
70-00073-00000000061

2'X4' SHORT VITRINE
21"W X 45"L X 7"H
70-00074-00000000061

2'X2' TALL VITRINE
21"W X 21"L X 12.5"H
70-00157-00000000061

2'X3' TALL VITRINE
21"W X 33"L X 12.5"H
70-00158-00000000061

2'X4' TALL VITRINE
21"W X 45"L X 12.5"H
70-00159-00000000061

● VITRINES FOR 36" WIDE UNITS



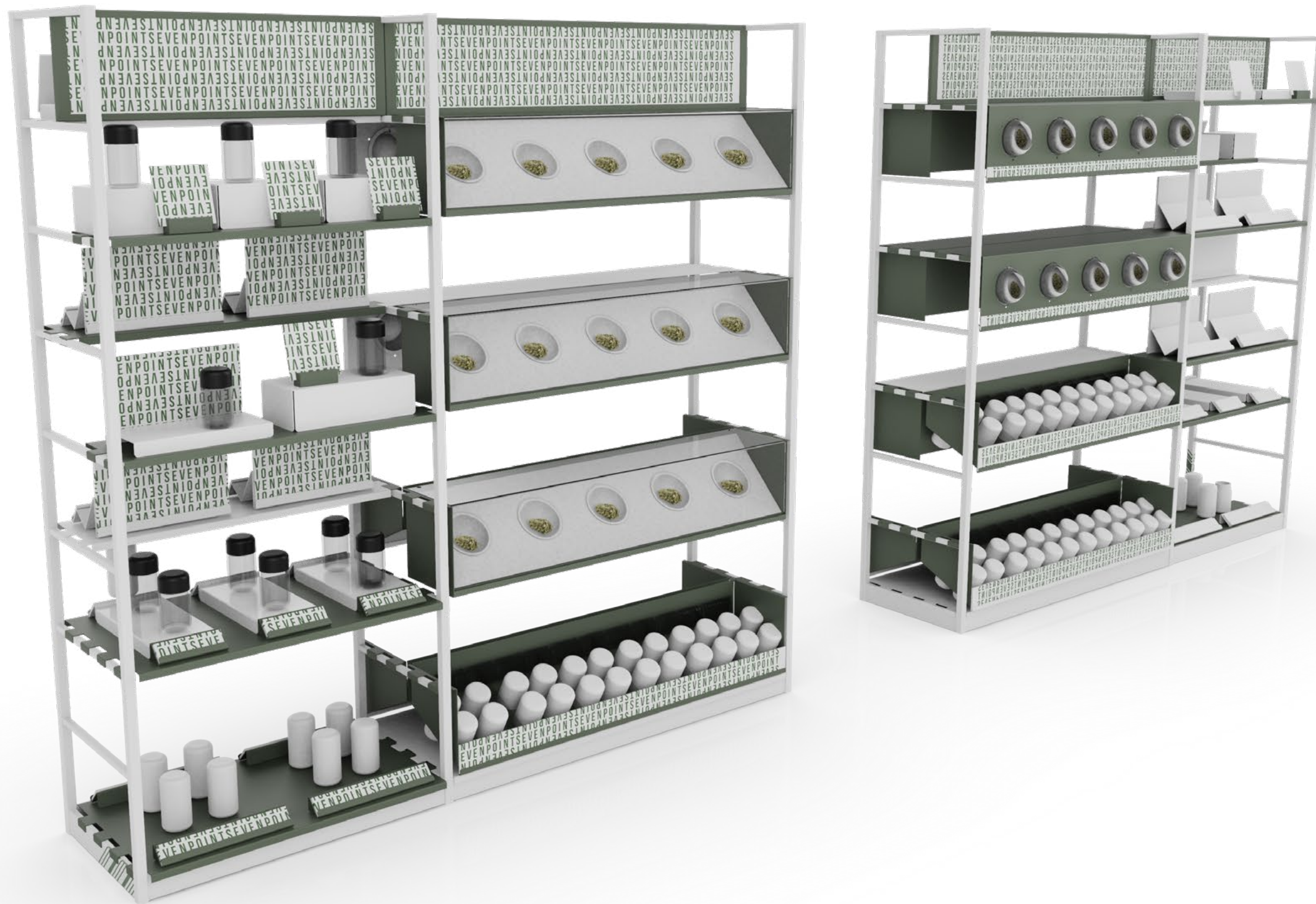
3'X3' SHORT VITRINE
33"W X 33"L X 7"H
70-00075-00000000061

3'X4' SHORT VITRINE
33"W X 45"L X 7"H
70-00076-00000000061

3'X3' TALL VITRINE
33"W X 33"L X 12.5"H
70-00160-00000000061

3'X4' TALL VITRINE
33"W X 45"L X 12.5"H
70-00161-00000000061

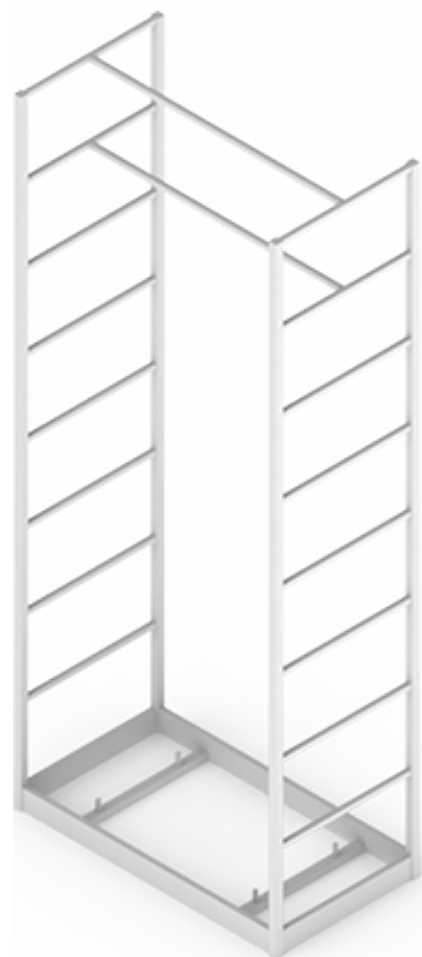




FREESTANDING FLOOR FIXTURES **COMPONENTS**

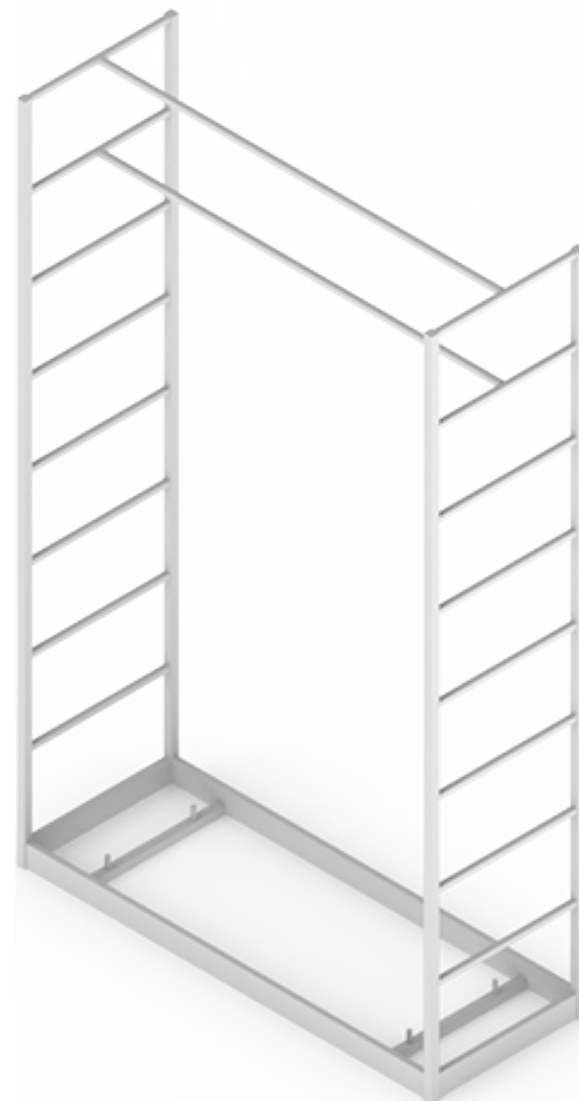
FREESTANDING FLOOR FIXTURES FRAMES

24" WIDE FRAMES



24" 1-BAY FREESTANDING SHELF FRAME
25.5"W X 14"D X 60"H
70-00341-00000000040

36" WIDE FRAMES

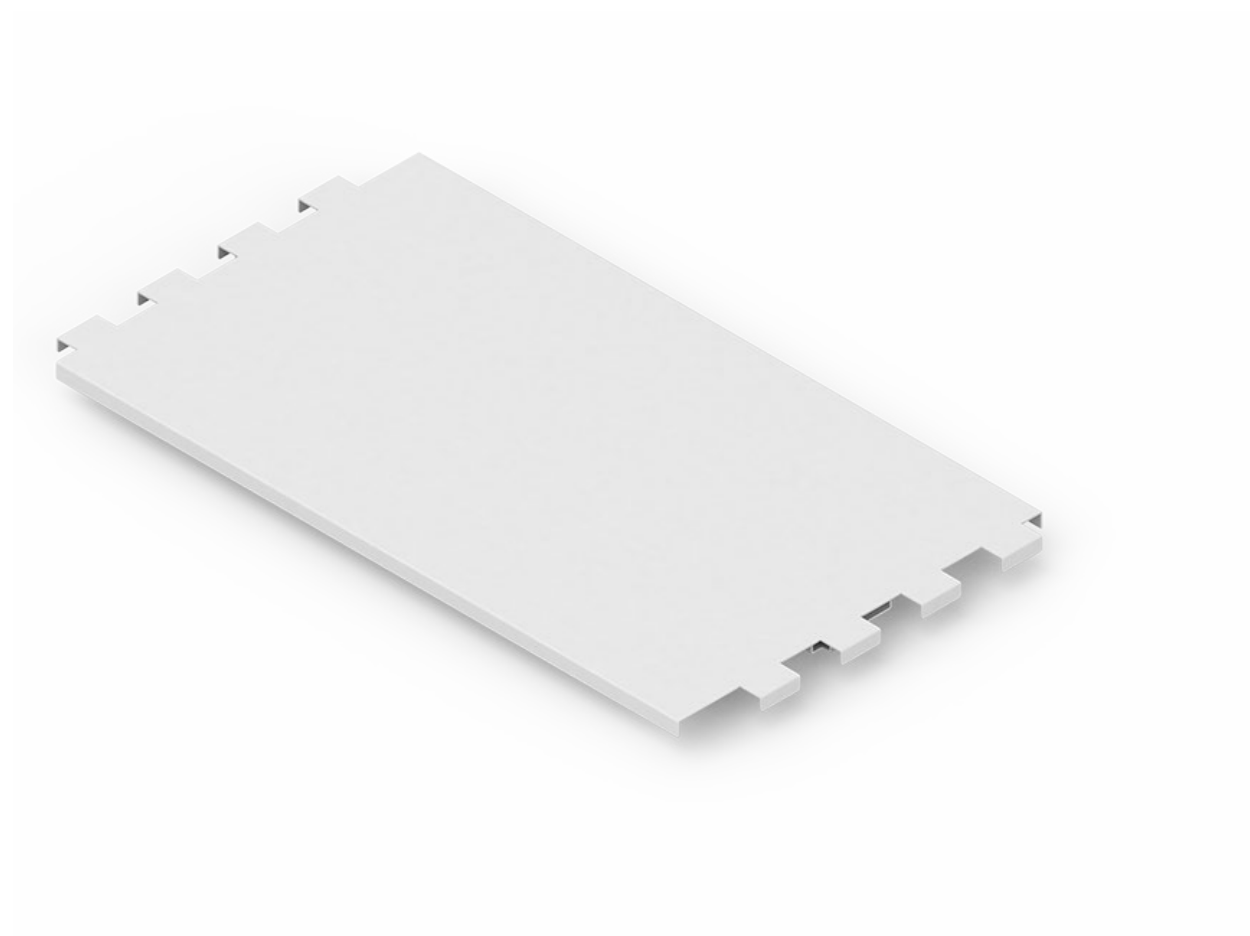


36" 1-BAY FREESTANDING FRAME
37.5"W X 14"D X 60"H
70-00343-00000000040



FREESTANDING FLOOR FIXTURES SHELVES

FULL DEPTH SHELVES



24" METAL FULL DEPTH SHELF
25.5"W X 14"D X .5"H
70-00345-00000000040

36" METAL FULL DEPTH SHELF
37.5"W X 14"D X .5"H
70-00346-00000000040

SHALLOW SHELVES



24" METAL SHALLOW SHELF
25.5"W X 6.625"D X .5"H
70-00347-00000000040

36" METAL SHALLOW SHELF
37.5"W X 6.625"D X .5"H
70-00348-00000000040



FREESTANDING FLOOR FIXTURES FEATURE SHELVES

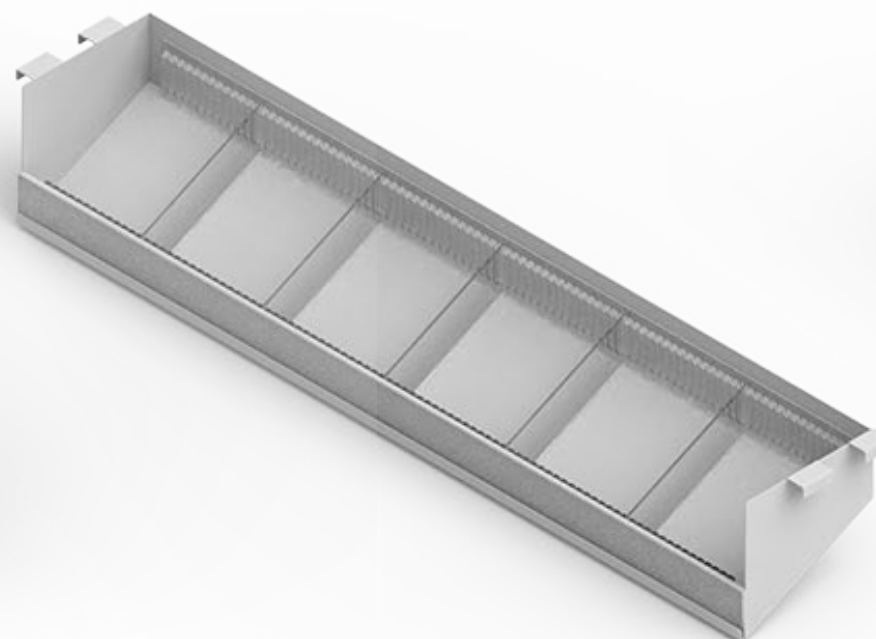
MINI SHELF VITRINES



24" MINI VITRINE SHELF
25.5"W X 6.625"D X 6.25"H
70-00349-00000000040

36" MINI VITRINE SHELF
37.5"W X 6.625"D X 6.25"H
70-003500000000040

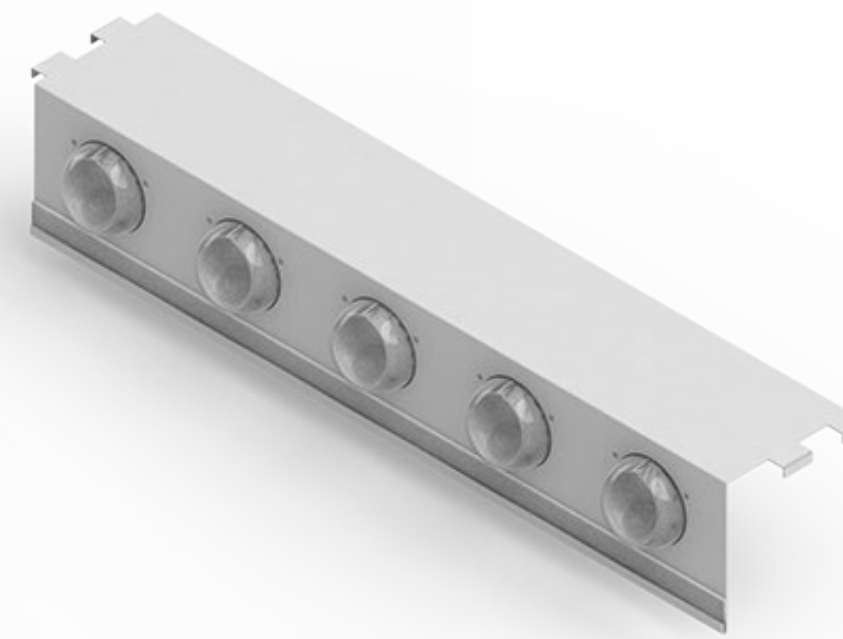
ANGLED MERCHANDISING BINS



24" ANGLED MERCHANDISING BIN SHELF
25.5"W X 6.625"D X 6.25"H
70-00353-00000000040

36" ANGLED MERCHANDISING BIN SHELF
37.5"W X 6.625"D X 6.25"H
70-00354-00000000040

FLOWER GLOBE SHELVES



24" FLOWER 3 GLOBE SHELF
25.5"W X 6.625"D X 6.25"H
70-00351-00000000040

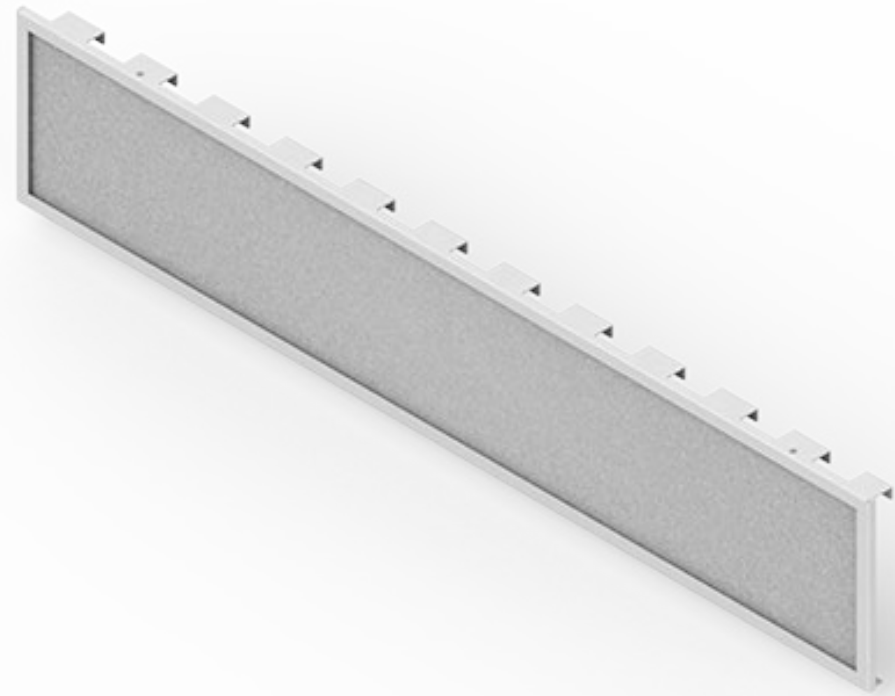
36" FLOWER 5 GLOBE SHELF
37.5"W X 6.625"D X 6.25"H
70-00352-00000000040



FREESTANDING FLOOR FIXTURES

GRAPHIC HEADERS

HEADERS



24" HEADER
25.5"W X .5"D X 7"H
70-00355-00000000040

36" HEADER
37.5"W X .5"D X 7"H
70-00356-00000000040



FREESTANDING FLOOR FIXTURES

PLINTHS

1' PLINTHS

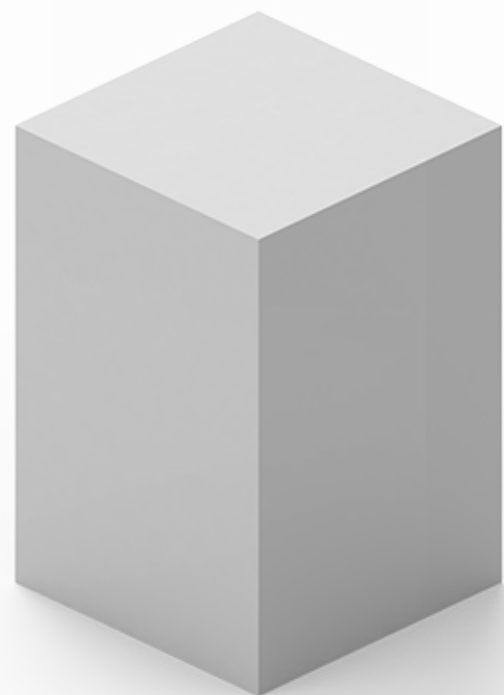


1' X 1' PLINTH - TALL
12"W X 12"D X 42"H
70-00357-00000000020

1' X 1' PLINTH - MEDIUM
12"W X 12"D X 36"H
70-00358-00000000020

1' X 1' PLINTH - SHORT
12"W X 12"D X 24"H
70-00359-00000000020

2' PLINTHS



2' X 2' PLINTH - TALL
24"W X 24"D X 42"H
70-00360-00000000020

2' X 2' PLINTH - MEDIUM
24"W X 24"D X 36"H
70-00361-00000000020

2' X 2' PLINTH - SHORT
24"W X 24"D X 24"H
70-00362-00000000020

1' PLINTHS WITH VITRINE

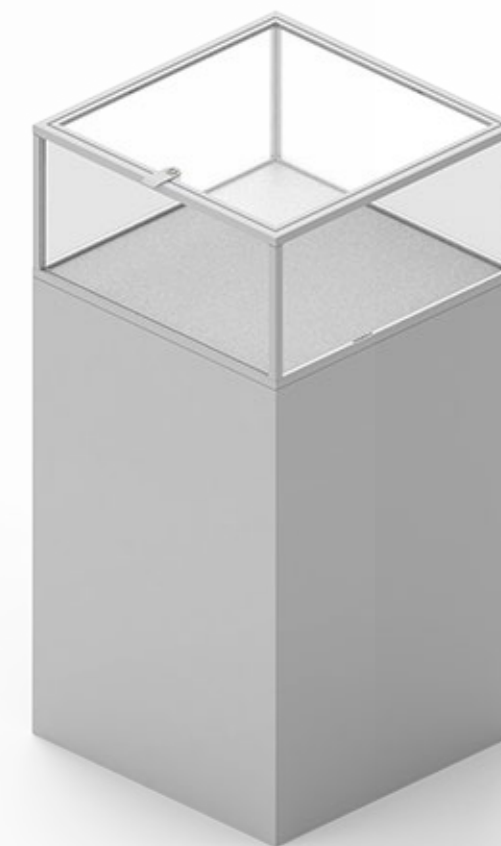


1' X 1' PLINTH WITH VITRINE - TALL
12"W X 12"D X 54"H
70-00363-00000000020

1' X 1' PLINTH WITH VITRINE - MEDIUM
12"W X 12"D X 48"H
70-00364-00000000020

1' X 1' PLINTH WITH VITRINE - SHORT
12"W X 12"D X 36"H
70-00365-00000000020

2' PLINTHS WITH VITRINE



2' X 2' PLINTH WITH VITRINE - TALL
24"W X 24"D X 54"H
70-00366-00000000020

2' X 2' PLINTH WITH VITRINE - MEDIUM
24"W X 24"D X 48"H
70-00367-00000000020

2' X 2' PLINTH WITH VITRINE - SHORT
24"W X 24"D X 36"H
70-00368-00000000020





CASH + BACK WRAP SYSTEM COMPONENTS

CASH WRAP CABINETS

POINT-OF-SALE CABINETS



24" P.O.S CABINET
24"W X 23.25"D X 33.5"H
WHITE INT.: 70-00215-00000000041
BLACK INT.: 70-00415-00000000041

36" P.O.S CABINET
36"W X 23.25"D X 33.5"
WHITE INT.: 70-00216-00000000041
BLACK INT.: 70-00416-00000000041

1-DOOR CABINETS



12" 1-DOOR STORAGE CABINET, RIGHT OPENING
12"W X 23.25"D X 33.5"H
WHITE INT.: 70-00217-00000000041
BLACK INT.: 70-00391-00000000041

12" 1-DOOR STORAGE CABINET, LEFT OPENING
12"W X 23.25"D X 33.5"H
WHITE INT.: 70-00218-00000000041
BLACK INT.: 70-00392-00000000041

24" 1-DOOR STORAGE CABINET, RIGHT OPENING
24"W X 23.25"D X 33.5"H
WHITE INT.: 70-00219-00000000041
BLACK INT.: 70-00393-00000000041

24" 1-DOOR STORAGE CABINET, LEFT OPENING
24"W X 23.25"D X 33.5"H
WHITE INT.: 70-00220-00000000041
BLACK INT.: 70-00394-00000000041

2-DOOR CABINETS



36" 2-DOOR STORAGE CABINET
36"W X 23.25"D X 33.5"H
WHITE INT.: 70-00221-00000000041
BLACK INT.: 70-00395-00000000041

OPEN STORAGE CABINETS



12" OPEN STORAGE CABINET
12"W X 23.25"D X 33.5"H
WHITE INT.: 70-00222-00000000041
BLACK INT.: 70-00412-00000000041

24" OPEN STORAGE CABINET
24"W X 23.25"D X 33.5"H
WHITE INT.: 70-00223-00000000041
BLACK INT.: 70-00413-00000000041

36" OPEN STORAGE CABINET
36"W X 23.25"D X 33.5"H
WHITE INT.: 70-00224-00000000041
BLACK INT.: 70-00414-00000000041



CASH WRAP CABINETS

24" DISPLAY CABINETS



24" 1-DOOR DISPLAY CABINET, LEFT
OPENING, LEFT + RIGHT SIDE MIRROR VITRINE
24"W X 23.25"D X 33.5"H
WHITE INT: 70-00226-00000000041
BLACK INT: 70-00401-00000000041

24" 1-DOOR DISPLAY CABINET, LEFT
OPENING, LEFT SIDE MIRROR VITRINE
24"W X 23.25"D X 33.5"H
WHITE INT: 70-00261-00000000041
BLACK INT: 70-00405-00000000041

24" 1-DOOR DISPLAY CABINET, LEFT
OPENING, RIGHT SIDE MIRROR VITRINE
24"W X 23.25"D X 33.5"H
WHITE INT: 70-00262-00000000041
BLACK INT: 70-00406-00000000041

24" 1-DOOR DISPLAY CABINET, RIGHT
OPENING, LEFT + RIGHT SIDE MIRROR VITRINE
24"W X 23.25"D X 33.5"H
WHITE INT: 70-00225-00000000041
BLACK INT: 70-00400-00000000041

24" 1-DOOR DISPLAY CABINET, RIGHT
OPENING, LEFT SIDE MIRROR VITRINE
24"W X 23.25"D X 33.5"H
WHITE INT: 70-00259-00000000041
BLACK INT: 70-00403-00000000041

24" 1-DOOR DISPLAY CABINET 1-DOOR, RIGHT
OPENING, RIGHT SIDE MIRROR VITRINE
24"W X 23.25"D X 33.5"H
WHITE INT: 70-00260-00000000041
BLACK INT: 70-00404-00000000041

36" DISPLAY CABINETS



36" 2-DOOR DISPLAY CABINET,
LEFT + RIGHT SIDE MIRROR VITRINE
36"W X 23.25"D X 33.5"H
WHITE INT: 70-00227-00000000041
BLACK INT: 70-00402-00000000041

36" 2-DOOR DISPLAY CABINET,
LEFT SIDE MIRROR VITRINE
36"W X 23.25"D X 33.5"H
WHITE INT: 70-00263-00000000041
BLACK INT: 70-00407-00000000041

36" 2-DOOR DISPLAY CABINET,
RIGHT SIDE MIRROR VITRINE
36"W X 23.25"D X 33.5"H
WHITE INT: 70-00264-00000000041
BLACK INT: 70-00408-00000000041

48" DISPLAY CABINETS



48" 2-DOOR DISPLAY CABINET,
LEFT + RIGHT SIDE MIRROR VITRINE
48"W X 23.25"D X 33.5"H
WHITE INT: 70-00299-00000000041
BLACK INT: 70-00409-00000000041

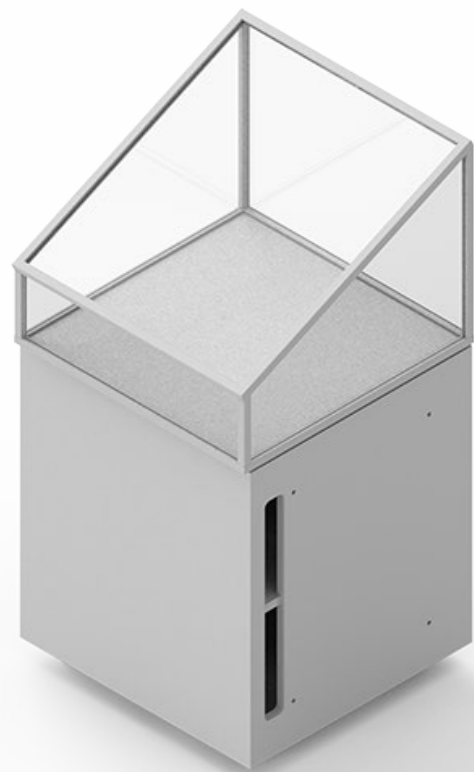
48" 2-DOOR DISPLAY CABINET,
LEFT SIDE MIRROR VITRINE
48"W X 23.25"D X 33.5"H
WHITE INT: 70-00300-00000000041
BLACK INT: 70-00410-00000000041

48" 2-DOOR DISPLAY CABINET,
RIGHT SIDE MIRROR VITRINE
48"W X 23.25"D X 33.5"H
WHITE INT: 70-00301-00000000041
BLACK INT: 70-00411-00000000041



CASH WRAP CABINETS

24" ANGLED DISPLAY CABINETS



24" 1-DOOR ANGLED DISPLAY CABINET, LEFT
OPENING, LEFT + RIGHT SIDE MIRROR VITRINE
24"W X 24"D X 39.5"H

WHITE INT: 70-00332-00000000041

BLACK INT: 70-00420-00000000041

24" 1-DOOR ANGLED DISPLAY CABINET, LEFT
OPENING, LEFT SIDE MIRROR VITRINE
24"W X 24"D X 39.5"H

WHITE INT: 70-00333-00000000041

BLACK INT: 70-00421-00000000041

24" 1-DOOR ANGLED DISPLAY CABINET, LEFT
OPENING, RIGHT SIDE MIRROR VITRINE
24"W X 24"D X 39.5"H

WHITE INT: 70-00334-00000000041

BLACK INT: 70-00422-00000000041

24" 1-DOOR ANGLED DISPLAY CABINET, RIGHT
OPENING, LEFT + RIGHT SIDE MIRROR VITRINE
24"W X 24"D X 39.5"H

WHITE INT: 70-00335-00000000041

BLACK INT: 70-00417-00000000041

24" 1-DOOR ANGLED DISPLAY CABINET, RIGHT
OPENING, LEFT SIDE MIRROR VITRINE
24"W X 24"D X 39.5"H

WHITE INT: 70-00336-00000000041

BLACK INT: 70-00418-00000000041

24" 1-DOOR ANGLED DISPLAY CABINET, RIGHT
OPENING, RIGHT SIDE MIRROR VITRINE
24"W X 24"D X 39.5"H

WHITE INT: 70-00337-00000000041

BLACK INT: 70-00419-00000000041

36" ANGLED DISPLAY CABINETS



36" 2-DOOR ANGLED DISPLAY CABINET,
LEFT + RIGHT SIDE MIRROR VITRINE
36"W X 24"D X 39.5"H

WHITE INT: 70-00338-00000000041

BLACK INT: 70-00423-00000000041

36" 2-DOOR ANGLED DISPLAY CABINET,
LEFT SIDE MIRROR VITRINE
36"W X 24"D X 39.5"H

WHITE INT: 70-00339-00000000041

BLACK INT: 70-00424-00000000041

36" 2-DOOR ANGLED DISPLAY CABINET,
RIGHT SIDE MIRROR VITRINE
36"W X 24"D X 39.5"H

WHITE INT: 70-00340-00000000041

BLACK INT: 70-00425-00000000041



CASH WRAP CABINETS

● 24" DELI DISPLAY CABINETS



24" 1-DRAWER DELI DISPLAY CABINET,
FRONT OPENING
24"W X 24"D X 39.5"H
WHITE INT: 70-00228-00000000041
BLACK INT: 70-00396-00000000041

24" 1-DRAWER DELI DISPLAY CABINET,
BACK OPENING
24"W X 24"D X 39.5"H
WHITE INT: 70-00229-00000000041
BLACK INT: 70-00397-00000000041

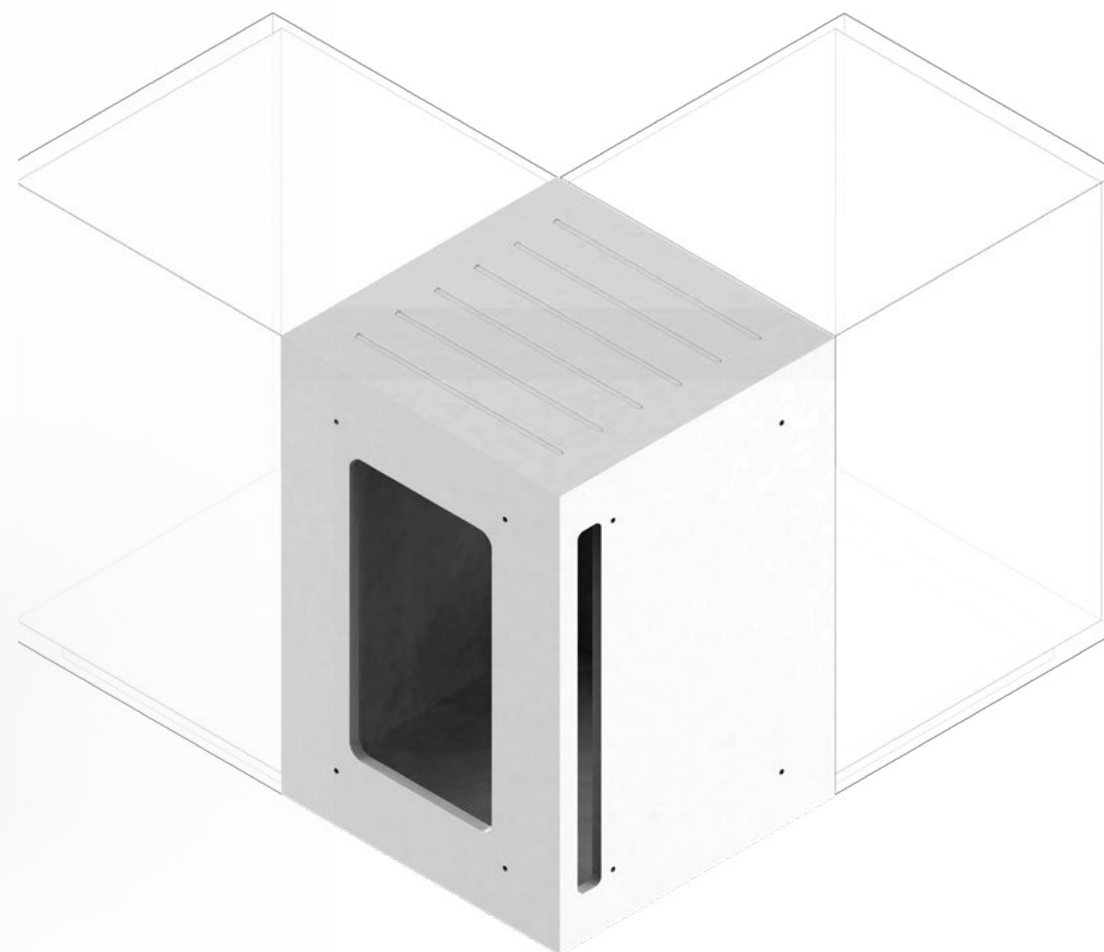
● 36" DELI DISPLAY CABINETS



36" 1-DRAWER DELI DISPLAY CABINET,
FRONT OPENING
36"W X 24"D X 39.5"H
WHITE INT: 70-00230-00000000041
BLACK INT: 70-00398-00000000041

36" 1-DRAWER DELI DISPLAY CABINET,
BACK OPENING
36"W X 24"D X 39.5"H
WHITE INT: 70-00231-00000000041
BLACK INT: 70-00399-00000000041

CORNER CABINETS



24" CORNER CABINET
24"W X 23.25"D X 33.5"H
WHITE INT: 70-00232-00000000040
BLACK INT: 70-00449-00000000040



BACK WRAP CABINETS

1-DOOR CABINETS



LEFT OPENING SHOWN

12" 1-DOOR STORAGE CABINET, RIGHT OPENING

12"W X 23.25"D X 33.5"H

WHITE INT: 70-00237-00000000061

BLACK INT: 70-00375-00000000061

12" 1-DOOR STORAGE CABINET, LEFT OPENING

12"W X 23.25"D X 33.5"H

WHITE INT: 70-00238-00000000061

BLACK INT: 70-00376-00000000061

24" 1-DOOR STORAGE CABINET, RIGHT OPENING

24"W X 23.25"D X 33.5"H

WHITE INT: 70-00239-00000000061

BLACK INT: 70-00377-00000000061

24" 1-DOOR STORAGE CABINET, LEFT OPENING

24"W X 23.25"D X 33.5"H

WHITE INT: 70-00240-00000000061

BLACK INT: 70-00378-00000000061

2-DOOR CABINETS



36" 2-DOOR STORAGE CABINET

36"W X 23.25"D X 33.5"H

WHITE INT: 70-00241-00000000061

BLACK INT: 70-00383-00000000061

1-DOOR SHALLOW CABINETS



LEFT OPENING SHOWN

12" 1-DOOR SHALLOW STORAGE CABINET, RIGHT OPENING

12"W X 12.5"D X 33.5"H

WHITE INT: 70-00242-00000000061

BLACK INT: 70-00381-00000000061

12" 1-DOOR SHALLOW STORAGE CABINET, LEFT OPENING

12"W X 12.5"D X 33.5"H

WHITE INT: 70-00243-00000000061

BLACK INT: 70-00382-00000000061

24" 1-DOOR SHALLOW STORAGE CABINET, RIGHT OPENING

24"W X 12.5"D X 33.5"H

WHITE INT: 70-00244-00000000061

BLACK INT: 70-00379-00000000061

24" 1-DOOR SHALLOW STORAGE CABINET, LEFT OPENING

24"W X 12.5"D X 33.5"H

WHITE INT: 70-00245-00000000061

BLACK INT: 70-00382-00000000061

2-DOOR SHALLOW CABINETS



36" 2-DOOR SHALLOW STORAGE CABINET

36"W X 12.5"D X 33.5"H

WHITE INT: 70-00246-00000000061

BLACK INT: 70-00384-00000000061

NOTE

Front doors typically receive laminate to match companion units. Black & white refers to internal cabinet materials.



BACK WRAP CABINETS

DRAWER CABINETS



24" 2-DRAWER STORAGE CABINET
24"W X 23.25"D X 33.5"H
WHITE INT: 70-00247-00000000061
BLACK INT: 70-00385-00000000061

36" 2-DRAWER STORAGE CABINET
36"W X 23.25"D X 33.5"H
WHITE INT: 70-00248-00000000061
BLACK INT: 70-00381-00000000061

DRAWER SHALLOW CABINETS



24" 2-DRAWER SHALLOW STORAGE CABINET
24"W X 12.5"D X 33.5"H
WHITE INT: 70-00277-00000000061
BLACK INT: 70-00388-00000000061

36" 2-DRAWER SHALLOW STORAGE CABINET
36"W X 12.5"D X 33.5"H
WHITE INT: 70-00269-00000000061
BLACK INT: 70-00387-00000000061

PASS-THROUGH CABINETS



18" PASS-THROUGH CABINET
18"W X 18.875"D X 33.5"H
WHITE INT: 70-00445-00000000041
BLACK INT: 70-00446-00000000041

24" PASS-THROUGH CABINET
24"W X 18.875"D X 33.5"H
WHITE INT: 70-00249-00000000061
BLACK INT: 70-00389-00000000061

NOTE
Front/external (in sales area) drawer faces typically receive laminate to match companion units. Black & white refers to internal cabinet materials (including drawer faces in B.O.H.).



CASH + BACK WRAP COVER PANELS

SIDE COVER PANELS



FRONT COVER PANEL
.75”T X 31.5”H *
70-00233-00000000020

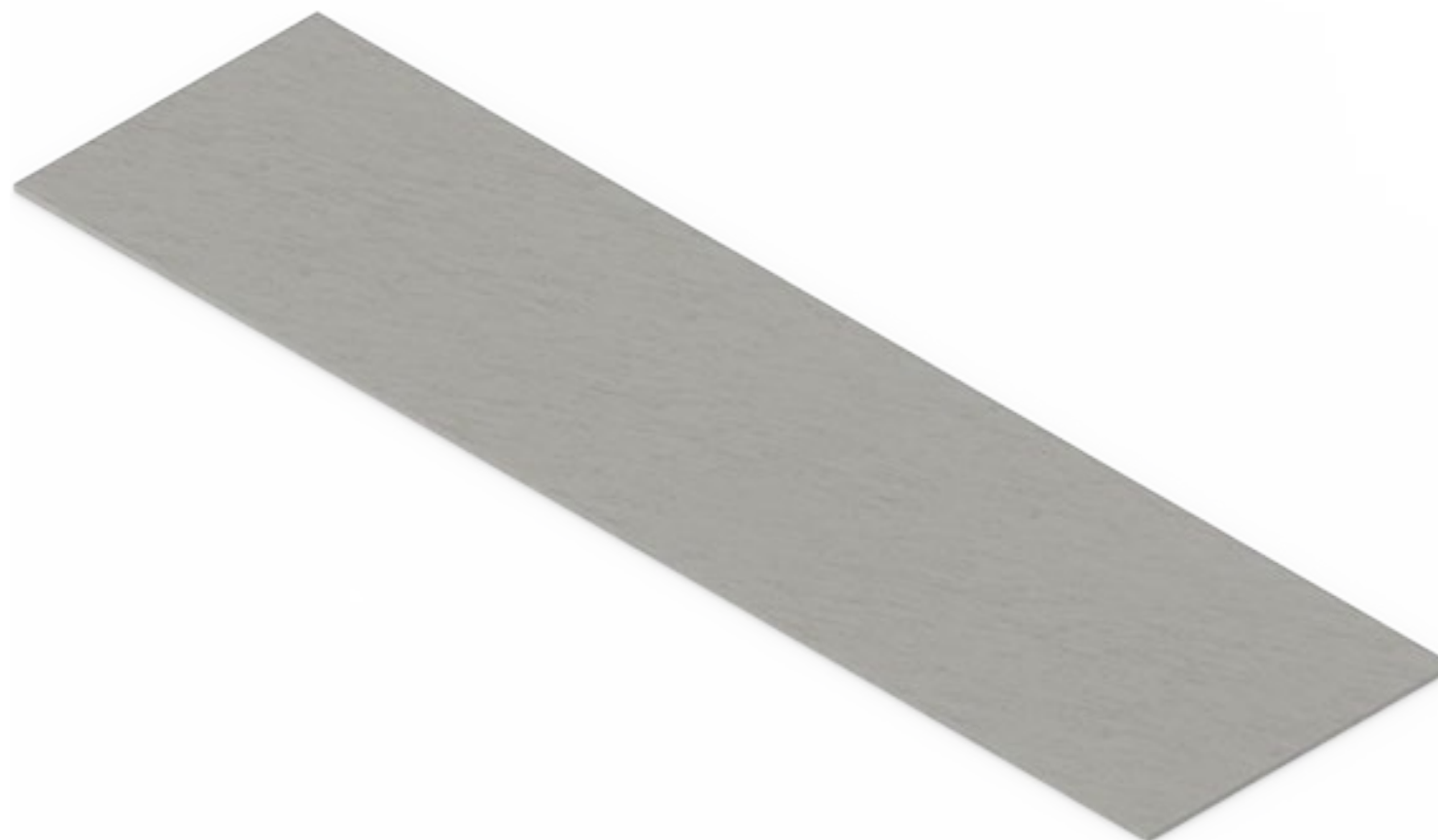
SHORT FRONT COVER PANEL
.75”T X 25”H
70-00234-00000000020

SIDE COVER PANEL
.75”T X 24”L X 31.5”H
70-00234-00000000020

SIDE COVER PANEL SHALLOW
.75”T X 24”L X 31.5”H
70-00252-00000000020

SHORT SIDE COVER PANEL
.75”T X 24”L X 25”H
70-00278-00000000020

COUNTER TOPS



SOLID SURFACE COUNTER TOP
5”T X 24”D *
70-00253-00000000010

LAMINATE COUNTER TOP
5”T X 24”D *
70-00255-00000000020

SOLID SURFACE SHALLOW COUNTER TOP
5”T X 13.5”D *
70-00254-00000000010

LAMINATE COUNTER SHALLOW TOP
.5”T X 13.5”D *
70-00256-00000000020

NOTE
* Length is custom to the required unit.



RECEPTION CABINETS

1-DOOR AGE GATE CABINETS



24" 1-DOOR RECEPTION CABINET
RIGHT OPENING
24"W X 24"D X 34"H
70-00172-00000000070

24" 1-DOOR RECEPTION CABINET
LEFT OPENING
24"W X 24"D X 34"H
70-00173-00000000070

2-DOOR AGE GATE CABINETS



36" 2-DOOR RECEPTION CABINET
36"W X 24"D X 34"H
70-00174-00000000070





LIGHTING COMPONENTS

LIGHTING

WALL SYSTEM

WALL SYSTEM POWER KIT

INCLUDES POWER TRACK AND TRANSFORMER

PERIMETER POWER KIT

70-00077-000000000000

REQUIRED FOR ALL WALL SYSTEM LIGHTING



WALL DOWN LIGHTING

INCLUDES MAGNETIC LED STRIP

24" MAGNETIC DOWN LIGHTING KIT

70-00017-000000000000

36" MAGNETIC DOWN LIGHTING KIT

70-00018-000000000000

48" MAGNETIC DOWN LIGHTING KIT

70-00108-000000000000

WALL BOX LIGHTING KIT

FOR USE WITHOUT WALL BAY

INCLUDES MAGNETIC LED STRIP AND 36W DRIVER

24" WALL MOUNT DISPLAY BOX POWER KIT

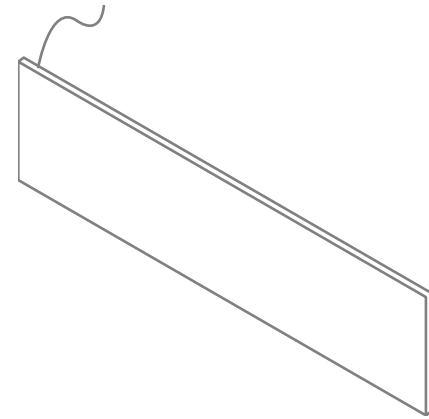
70-00000-000000000000

36" WALL MOUNT DISPLAY BOX POWER KIT

70-00000-000000000000

HEADER SIGN LED PANEL LIGHTING KIT

INCLUDES LED PANEL



24" SHORT HEADER SIGN LED PANEL LIGHTING KIT

70-00049-000000000000

24" TALL HEADER SIGN LED PANEL LIGHTING KIT

70-00129-000000000000

36" SHORT HEADER SIGN LED PANEL LIGHTING KIT

70-00050-000000000000

36" TALL HEADER SIGN LED PANEL LIGHTING KIT

70-00130-000000000000

48" SHORT HEADER SIGN LED PANEL LIGHTING KIT

70-00131-000000000000

48" TALL HEADER SIGN LED PANEL LIGHTING KIT

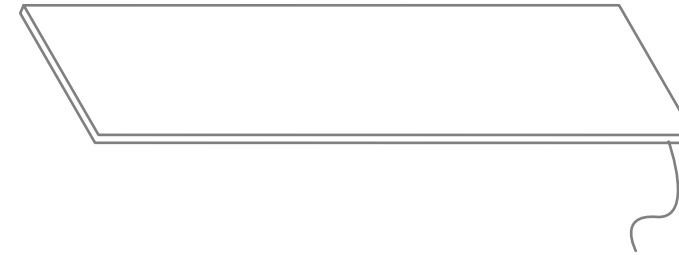
70-00132-000000000000

LIGHTING

TABLE SYSTEM

DISPLAY BOX TABLE LED PANEL LIGHTING KIT

INCLUDES LED PANEL, METAL LIGHT DIFFUSER, 36W DRIVER + CABLE MANAGEMENT TRAY



2'X2' DISPLAY BOX TABLE LED PANEL LIGHTING KIT

70-00134-000000000060

2'X3' DISPLAY BOX TABLE LED PANEL LIGHTING KIT

70-00135-000000000060

2'X4' DISPLAY BOX TABLE LED PANEL LIGHTING KIT

70-00136-000000000060

3'X3' DISPLAY BOX TABLE LED PANEL LIGHTING KIT

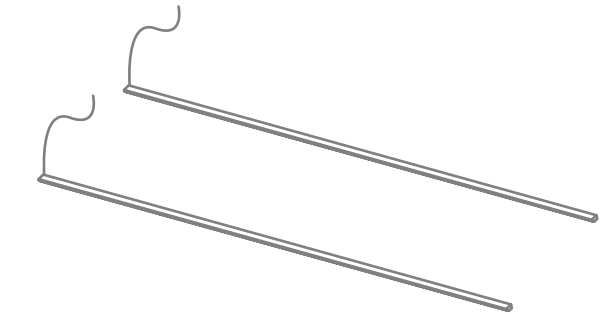
70-00137-000000000060

3'X4' DISPLAY BOX TABLE LED PANEL LIGHTING KIT

70-00138-000000000060

DISPLAY BOX TABLE DOWN LIGHTING KIT

INCLUDES 2 MAGNETIC LED STRIPS, 2 METAL LIGHT DIFFUSERS, 36W DRIVER + CABLE MANAGEMENT TRAY



2' DISPLAY BOX DOWN LIGHTING KIT

70-00309-000000000040

3' DISPLAY BOX DOWN LIGHTING KIT

70-00310-000000000040

4' DISPLAY BOX DOWN LIGHTING KIT

70-00311-000000000040

NOTE

Table-mounted lighting requires floor power outlets and are powered by a visible cord.

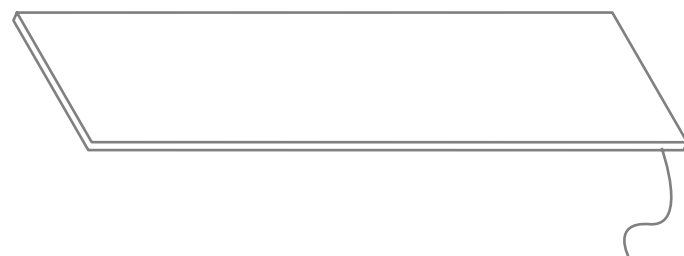


LIGHTING

VITRINES

VITRINE LED PANEL LIGHTING KIT

INCLUDES LED PANEL, METAL LIGHT DIFFUSER + 36W DRIVER



1'X2' VITRINE LED PANEL LIGHTING KIT
70-00139-00000000040

1'X3' VITRINE LED PANEL LIGHTING KIT
70-00140-00000000040

2'X2' VITRINE LED PANEL LIGHTING KIT
70-00141-00000000040

2'X3' VITRINE LED PANEL LIGHTING KIT
70-00142-00000000040

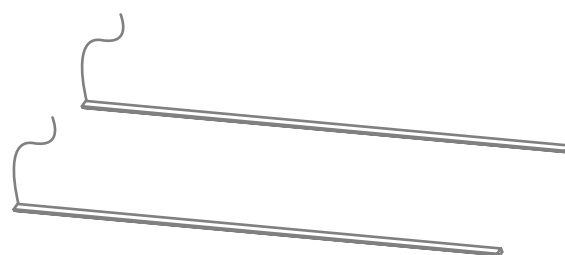
2'X4' VITRINE LED PANEL LIGHTING KIT
70-00143-00000000040

3'X3' VITRINE LED PANEL LIGHTING KIT
70-00144-00000000040

3'X4' VITRINE LED PANEL LIGHTING KIT
70-00145-00000000040

VITRINE DOWN LIGHTING KIT

INCLUDES MAGNETIC LED STRIPS, METAL LIGHT DIFFUSERS + 36W DRIVER



2' MAGNETIC VITRINE DOWN LIGHTING KIT - 1 LIGHT
70-00146-00000000040

2' MAGNETIC VITRINE DOWN LIGHTING KIT - 2 LIGHT
70-00326-00000000040

3' MAGNETIC VITRINE DOWN LIGHTING KIT - 1 LIGHT
70-00147-00000000040

3' MAGNETIC VITRINE DOWN LIGHTING KIT - 2 LIGHT
70-00327-00000000040

4' MAGNETIC VITRINE DOWN LIGHTING KIT - 1 LIGHT
70-00148-00000000040

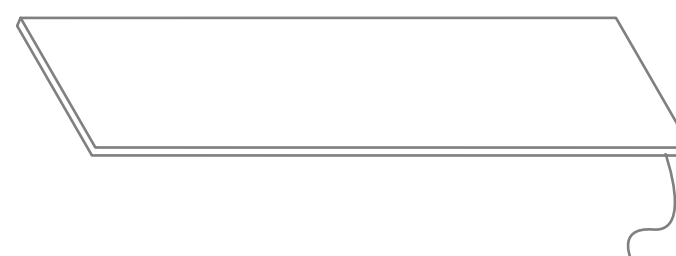
4' MAGNETIC VITRINE DOWN LIGHTING KIT - 2 LIGHT
70-00328-00000000040

LIGHTING

CASH WRAP

CASH WRAP DISPLAY CABINET LED PANEL LIGHTING KIT

INCLUDES LED PANEL, METAL LIGHT DIFFUSER, 36W DRIVER + POWER STRIP



24" P.O.S DISPLAY CABINET LED PANEL LIGHTING KIT
70-00149-00000000000

36" P.O.S DISPLAY CABINET LED PANEL LIGHTING KIT
70-00150-00000000000

48" P.O.S DISPLAY CABINET LED PANEL LIGHTING KIT
70-00307-00000000000

FLOOR POWER KIT

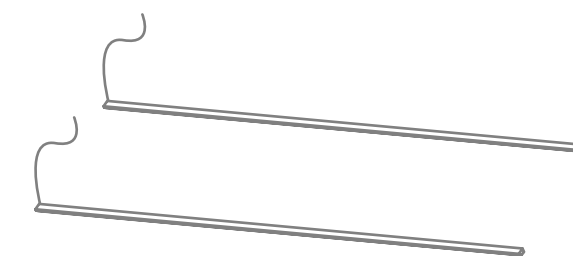
POWER STRIP WITH COILED CORD USED FOR TABLES WHEN LIGHTING KITS ARE REQUIRED

FLOOR POWER KIT, BLACK COIL
70-00314-00000000000

FLOOR POWER KIT, WHITE COIL
70-00315-00000000000

CASH WRAP DISPLAY CABINET DOWN LIGHTING KIT

INCLUDES 2 MAGNETIC LED STRIPS, 2 METAL LIGHT DIFFUSERS, 36W DRIVER + POWER STRIP WITH COILED CORD (BLACK OR WHITE)



24" DISPLAY CABINET DOWN LIGHTING KIT
70-00312-00000000040

36" DISPLAY CABINET DOWN LIGHTING KIT
70-00313-00000000040

48" DISPLAY CABINET DOWN LIGHTING KIT
70-00308-00000000040





VISUAL MERCHANDISING COMPONENTS

VISUAL MERCHANDISING DISPLAY ACCESSORIES



10" BIN
10"W X 5"D X 3"H
70-00183-00000000040

CARD HOLDER
3"W X 1"D X 1"H
70-00190-00000000040



5" BIN
5"W X 5"D X 3"H
70-00182-00000000040

5" TICKET STRIP
5"W X 3"D X 1"H
70-00188-00000000040



5" ANGLED RAMP WITH LOCATOR TABS
5"W X 5"D X 3"H
70-00177-00000000040



5" SHORT RISER
5"W X 5"D X 1"H
70-00186-00000000040



VISUAL MERCHANDISING DISPLAY ACCESSORIES



10" ELEVATED ANGLED RUNWAY
WITH GRAPHIC CHANNEL
10"W X 5"D X 3"H
70-00214-00000000040



10" ANGLED RAMP WITH LEDGE
WITH GRAPHIC CHANNEL
10"W X 5"D X 3"H
70-00176-00000000040



VISUAL MERCHANDISING DISPLAY ACCESSORIES



5" SHORT RISER
5"W X 5"D X 1"H
70-00186-0000000040



5" SHORT BIN
5"W X 5"D X 1"H
70-00265-0000000040



CARD HOLDER
3"W X 1"D X 1"H
70-00190-0000000040



VISUAL MERCHANDISING ACCESSORIES



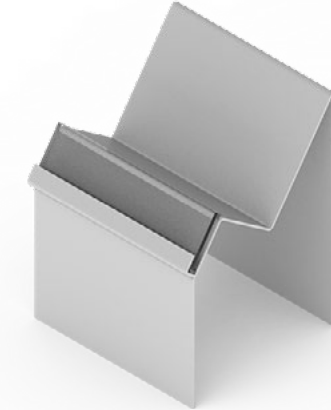
5" ANGLED RAMP WITH LEDGE
+ ACRYLIC GRAPHIC HOLDER
5"W X 5"D X 3"H
70-00175-00000000040



5" ANGLED RAMP WITH LOCATOR TABS
+ ACRYLIC GRAPHIC HOLDER
5"W X 5"D X 3"H
70-00177-00000000040



5" ANGLED RUNWAY + GRAPHIC CHANNEL
+ 2 ACRYLIC GRAPHIC HOLDERS
5"W X 5"D X 3"H
70-00179-00000000040



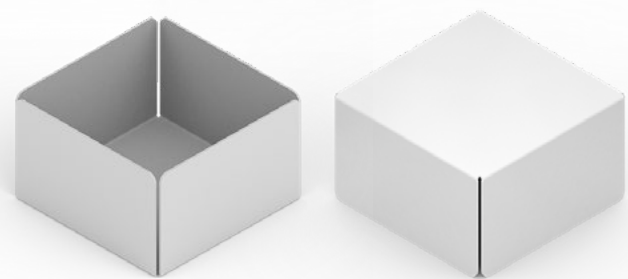
5" ELEVATED ANGLED RUNWAY
+ GRAPHIC CHANNEL + ACRYLIC GRAPHIC HOLDER
5"W X 5"D X 6"H
70-00181-00000000040

10" ANGLED RAMP WITH LEDGE
+ ACRYLIC GRAPHIC HOLDER
10"W X 5"D X 3"H
70-00176-00000000040

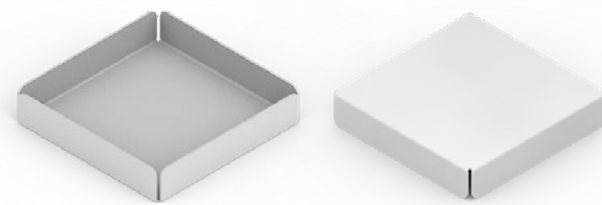
10" ANGLED RAMP WITH LOCATOR TABS
+ ACRYLIC GRAPHIC HOLDER
10"W X 5"D X 3"H
70-00178-00000000040

10" ANGLED RUNWAY + GRAPHIC CHANNEL
+ 2 ACRYLIC GRAPHIC HOLDERS - 10"
10"W X 5"D X 3"H
70-00180-00000000040

10" ELEVATED ANGLED RUNWAY
+ GRAPHIC CHANNEL + ACRYLIC GRAPHIC HOLDER
10"W X 5"D X 6"H
70-00214-00000000040



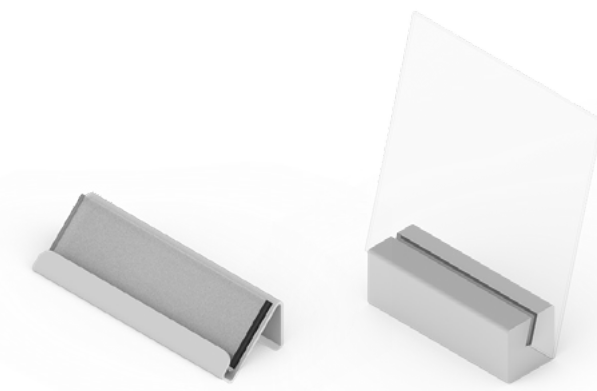
5" BIN
5"W X 5"D X 3"H
70-00182-00000000040



5" SHORT BIN
5"W X 5"D X 1"H
70-00265-00000000040



5" SHORT RISER + ACRYLIC GRAPHIC HOLDER
5"W X 5"D X 1"H
70-00186-00000000040



5" TICKET STRIP + ACRYLIC GRAPHIC HOLDER
5"W X 3"D X 1"H
70-00188-00000000040

10" BIN
10"W X 5"D X 3"H
70-00183-00000000040

10" SHORT BIN
10"W X 5"D X 1"H
70-00266-00000000040

10" SHORT RISER + ACRYLIC GRAPHIC HOLDER
10"W X 5"D X 1"H
70-00187-00000000040

10" TICKET STRIP + ACRYLIC GRAPHIC HOLDER
10"W X 3"D X 1"H
70-00189-00000000040

10" X 10" SHORT BIN
10"W X 10"D X 1"H
70-00291-00000000040

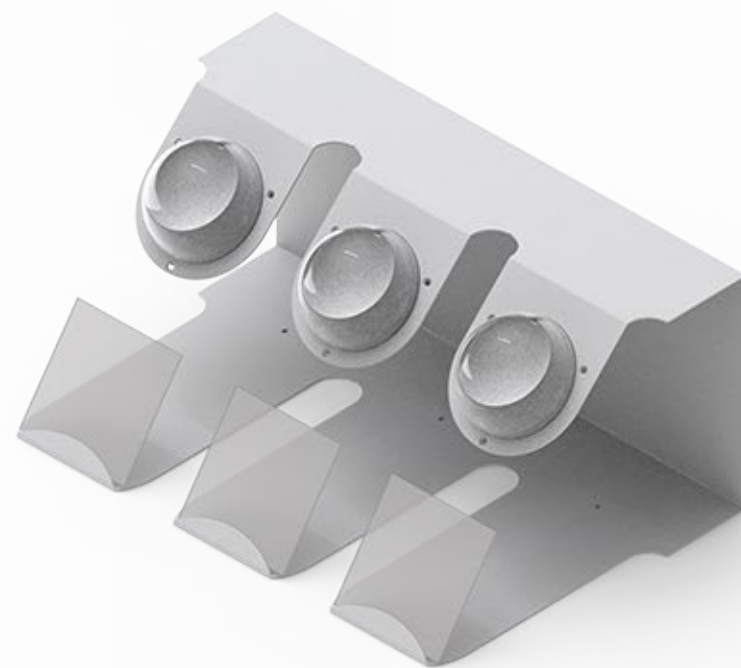
CARD HOLDER
3"W X 1"D X 1"H
70-00190-00000000040



VISUAL MERCHANDISING ACCESSORIES



COMBO GLOBE - SINGLE
6"W X 11.5"D X 8"H
70-00330-00000000040



COMBO GLOBE - SET OF 3
18"W X 11.5"D X 8"H
70-00331-00000000040



SOLO GLOBE
5"W X 5"D X 3"H
70-00329-00000000040



LOLLIPOP GLOBE
5"W X 5"D X 15"H
70-00373-00000000040



VISUAL MERCHANDISING DISPLAY FRAME SYSTEMS



TOP:

32" METAL DISPLAY FRAME
+ 7 FLOWER GLOBE TEMPLATES
BASE 32"W X 8"D X 6.5"H
TEMPLATE 4"W X 8"H
70-00203-00000000040

BOTTOM:

32" METAL DISPLAY FRAME
+ 4 BUD BAR CANNA-PODS
BASE 32"W X 8"D X 6.5"H
70-00195-00000000040



VISUAL MERCHANDISING

DISPLAY FRAME SYSTEMS

DISPLAY FRAME WITH BUD BAR SENSORY JARS

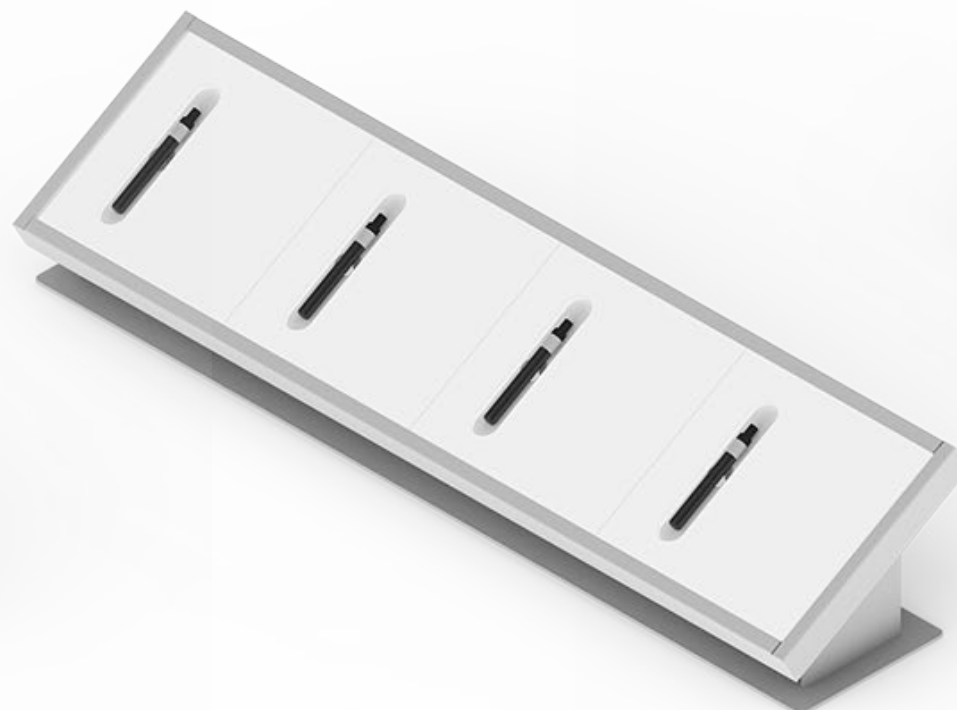


23" DISPLAY FRAME + 4 BUD BAR SENSORY JARS
 BASE 24"W X 8"D X 6.5"H
 TEMPLATE 8.8"W X 8"H
 70-00194-00000000040

32" DISPLAY FRAME + 4 BUD BAR SENSORY JARS
 BASE 32"W X 8"D X 6.5"H
 TEMPLATE 8.8"W X 8"H
 70-00195-00000000040

DISPLAY FRAME FOR VAPE PEN DISPLAY

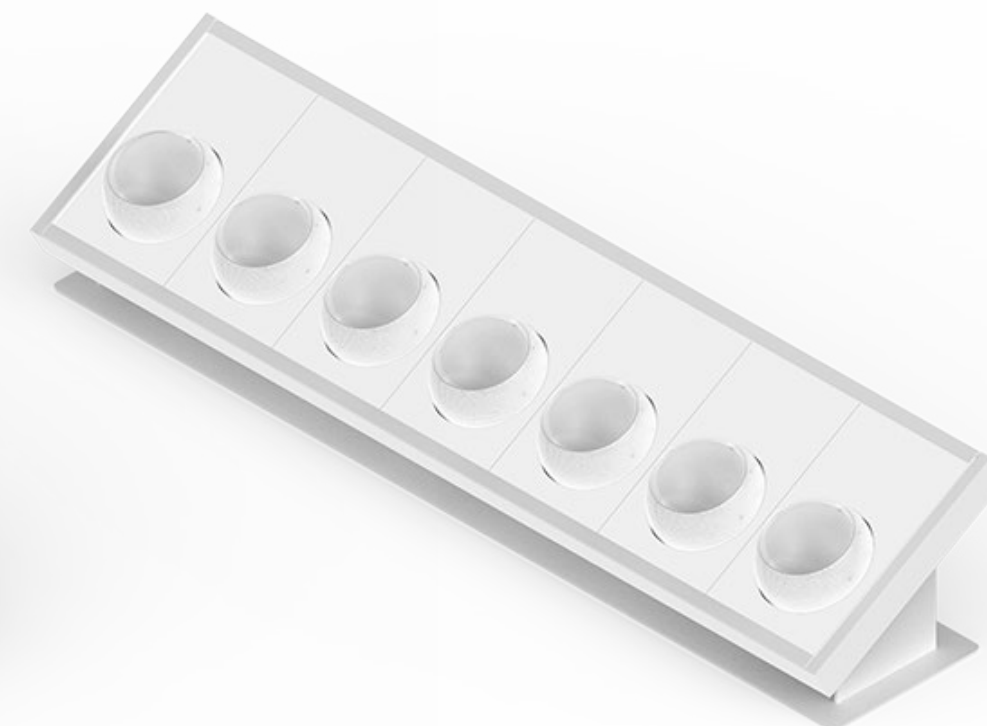
INCLUDES SECURITY TETHER



19.5" DISPLAY FRAME + 2 VAPE PEN TEMPLATES
 BASE 24"W X 8"D X 6.5"H
 TEMPLATE 8.8"W X 8"H
 70-00198-00000000040

32" DISPLAY FRAME + 4 VAPE PEN TEMPLATES
 BASE 32"W X 8"D X 6.5"H
 TEMPLATE 8.8"W X 8"H
 70-00199-00000000040

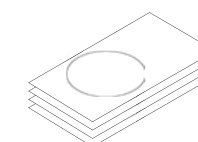
DISPLAY FRAME WITH FLOWER ORBS



23" DISPLAY FRAME + 5 FLOWER GLOBE TEMPLATES
 BASE 23"W X 8"D X 6.5"H
 TEMPLATE 4.4"W X 8"H
 70-00202-00000000040

32" DISPLAY FRAME + 7 FLOWER GLOBE TEMPLATES
 BASE 32"W X 8"D X 6.5"H
 TEMPLATE 4.4"W X 8"H
 70-00203-00000000040

DISPLAY FRAME FLOWER GLOBE PRINTER TEMPLATES
 25 PACK - 2 PER SHEET
 BASE 32"W X 8"D X 6.5"H
 TEMPLATE 4"W X 8"H
 70-00280-00000000000



VISUAL MERCHANDISING DISPLAY FRAME SYSTEMS

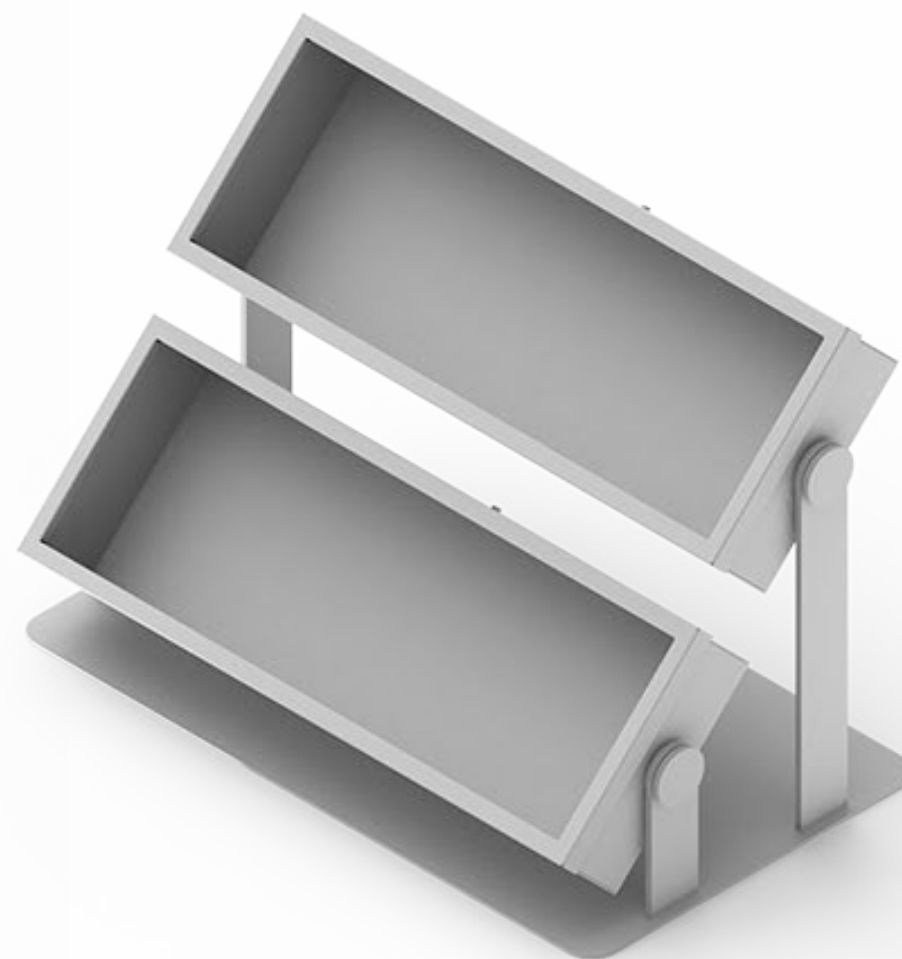
THE CHASSIS



23" CHASSIS
25"L X 8"W X 6.5"H
70-00369-00000000040

32" CHASSIS
34"L X 8"W X 6.5"H
70-00370-00000000040

THE CHASSIS - DOUBLE TIER



23" CHASSIS - DOUBLE TIER
25"L X 14.5"W X 18"H
70-00371-00000000040

32" CHASSIS - DOUBLE TIER
34"L X 14.5"W X 18"H
70-00372-00000000040



VISUAL MERCHANDISING

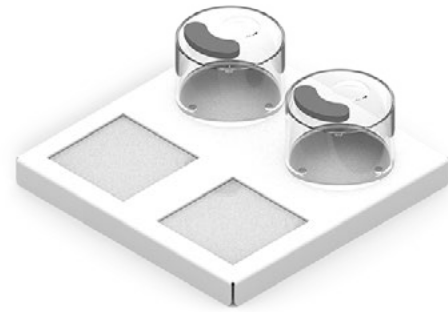
SENSORY PLATFORM

SENSORY PLATFORM WITH BUD BAR CANNA PODS

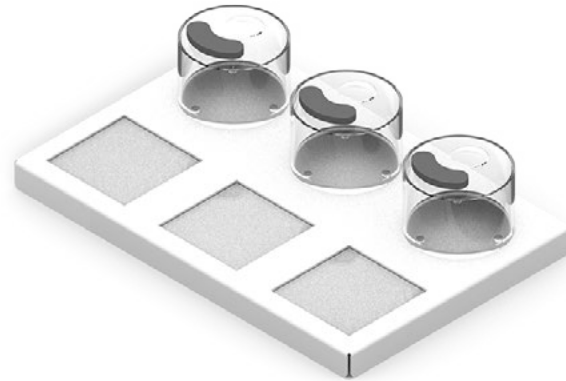
INCLUDES SECURITY TETHER



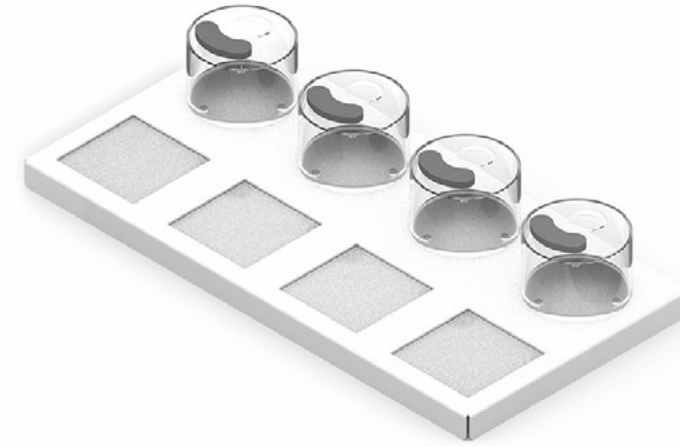
METAL RISER W/ 1 BUD BAR CANNA POD
BASE 5"W X 10"L X 1.5"H
70-00191-00000000040



METAL RISER W/ 2 BUD BAR CANNA PODS
BASE 10"W X 10"L X 1.5"H
70-00271-00000000040



METAL RISER W/ 3 BUD BAR CANNA PODS
BASE 15"W X 10"L X 1.5"H
70-00273-00000000040



METAL RISER W/ 4 BUD BAR CANNA PODS
BASE 20"W X 10"L X 1.5"H
70-00275-00000000040

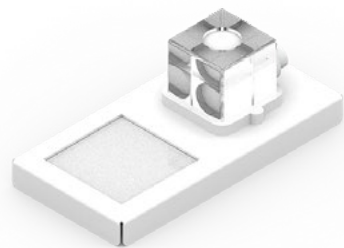


BUD BAR CANNA POD REPLACEMENT
CAN ALSO BE PURCHASED
FROM BUD BAR DISPLAYS
70-00304-00000000040

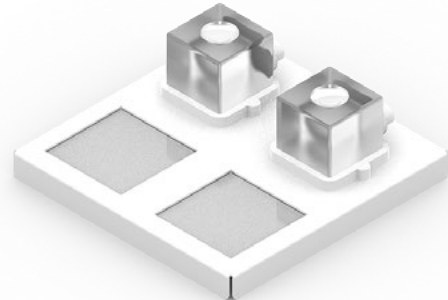
SECURITY TETHER REPLACEMENT
70-00306-00000000040

SENSORY PLATFORM WITH BUD BAR PUFFER PODS

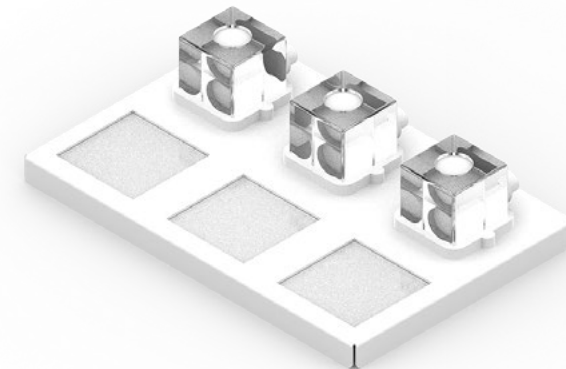
INCLUDES SECURITY TETHER



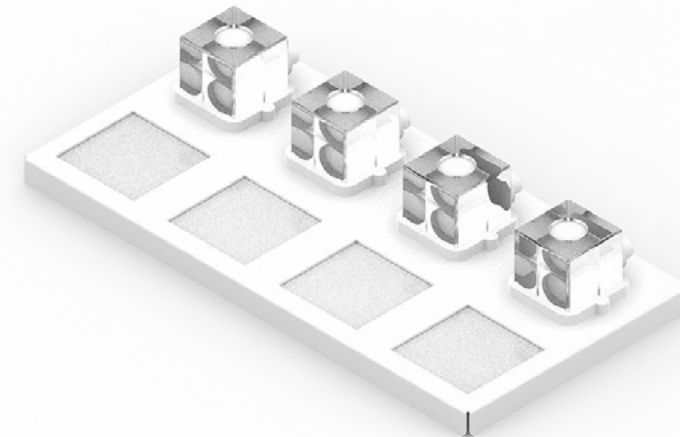
METAL RISER W/ 1 BUD BAR PUFFER POD
BASE 5"W X 10"L X 1.5"H
70-00270-00000000040



METAL RISER W/ 2 BUD BAR PUFFER PODS
BASE 10"W X 10"L X 1.5"H
70-00272-00000000040



METAL RISER W/ 3 BUD BAR PUFFER PODS
BASE 15"W X 10"L X 1.5"H
70-00274-00000000040



METAL RISER W/ 4 BUD BAR PUFFER PODS
BASE 20"W X 10"L X 1.5"H
70-00276-00000000040



BUD BAR PUFFER POD REPLACEMENT
CAN ALSO BE PURCHASED
FROM BUD BAR DISPLAYS
70-00305-00000000040

SECURITY TETHER REPLACEMENT
70-00306-00000000040



THE MODULE SYSTEM

2022 COMPONENTS CATALOGUE

FOR INQUIRIES, PLEASE CONTACT:
INFO@SEVENPOINTINTERIORS.COM

www.sevenpointinteriors.com

A DIVISION OF  visual
elements